



# **SPSS**

## **(Statistical Package for the Social Sciences)**

***Yařar Tonta***

**H.Ü. Bilgi ve Belge Yönetimi Bölümü**

**tonta@hacettepe.edu.tr**

**<http://yunus.hacettepe.edu.tr/~tonta/tonta.html>**

Start menu structure:

- Programs
  - Accessories
  - Adobe
  - Microsoft Excel
  - Microsoft Word
  - SPSS for Windows**
  - Rational ClearQuest
  - SPSS MR
  - DeltaGraph
  - XML Spy 3.0
- Documents
- Settings
- Search
- Help
- Run...
- Shut Down...

SPSS sub-menu:

- SPSS for Windows
- SPSS Production Facility

# Data Editor



File Edit View Data Transform Analyze Graphs Utilities Window Help



1 :

	var	var	var	var	var	var	
1							
2							
3							
4							
5							
6							
7							
8							
9							
10							
11							
12							
13							
14							
15							

◀ ▶ **Data View** Variable View ▶



File Edit View Data Transform Analyze Graphs Utilities Window Help

- New ▶
- Open** ▶
  - Data...
  - Syntax...
  - Output...
  - Script...
  - Other...
- Open Database ▶
- Read Text Data
- Enhance Data...

---

- Save Ctrl+S
- Save As...

---

- Display Data Info...
- Apply Data Dictionary...
- Cache Data...

---

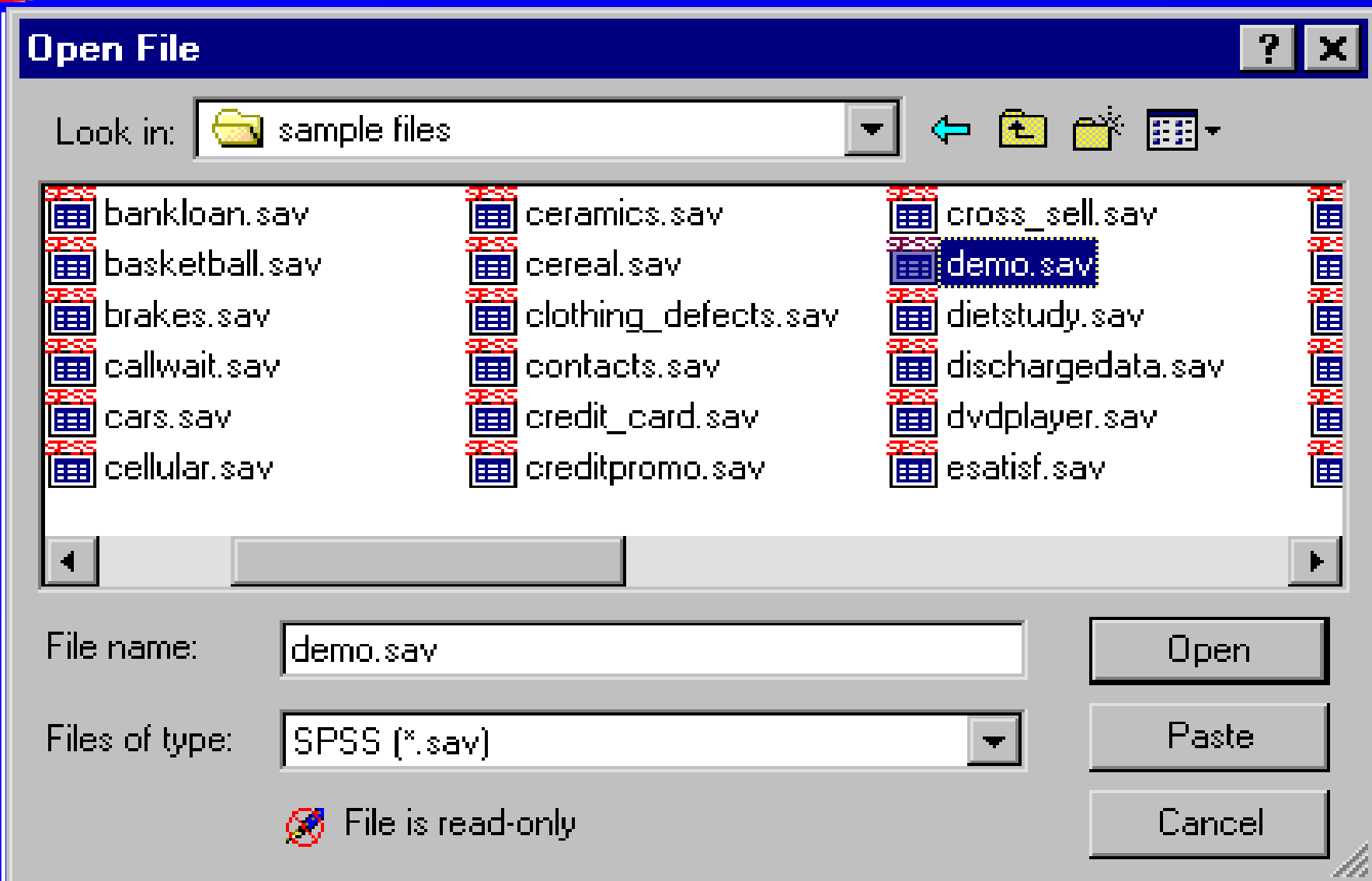
- Print... Ctrl+P
- Print Preview

---

- Switch Server...
- Stop Processor Ctrl+.
- Recently Used Data ▶
- Recently Used Files ▶

---

- Exit





Untitled - SPSS Data Editor

File Edit View Data Transform Analyze Graphs Utilities Window Help

- New
  - Data
  - Syntax
  - Output
  - Draft Output
  - Script
- Open
- Open Database
- Read Text Data
- Save (Ctrl+S)
- Save As...
- Display Data Info...
- Cache Data...
- Print... (Ctrl+P)
- Print Preview
- Switch Server...
- Stop Processor (Ctrl+.)
- Recently Used Data
- Recently Used Files
- Exit

	var	var	var	var	var	var	var	var	var	var	var	var	var
13													
14													
15													
16													
17													
18													
19													
20													
21													
22													
23													
24													
25													
26													
27													
28													
29													
30													
31													
32													

SPSS Processor is ready



Untitled - SPSS Data Editor

File Edit View Data Transform Analyze Graphs Utilities Window Help

1:

	var	var	var	var	var	var	var	var	var	var	var	var	var	var
1														
2														
3														
4														
5														
6														
7														
8														
9														
10														
11														
12														
13														
14														
15														
16														
17														
18														
19														
20														
21														
22														
23														
24														
25														
26														
27														
28														
29														
30														
31														
32														

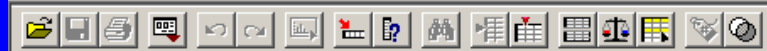
Data View Variable View

SPSS Processor is ready



Untitled - SPSS Data Editor

File Edit View Data Transform Analyze Graphs Utilities Window Help



	Name	Type	Width	Decimals	Label	Values	Missing	Columns	Align	Measure
1										
2										
3										
4										
5										
6										
7										
8										
9										
10										
11										
12										
13										
14										
15										
16										
17										
18										
19										
20										
21										
22										
23										
24										
25										
26										
27										

Data View Variable View

SPSS Processor is ready





Untitled - SPSS Data Editor

File Edit View Data Transform Analyze Graphs Utilities Window Help



	Name	Type	Width	Decimals	Label	Values	Missing	Columns	Align	Measure
1	yas	Numeric	8	2		None	None	8	Right	Scale
2	medenhal	Numeric	8	2		None	None	8	Right	Scale
3	gelir	Numeric	8	2		None	None	8	Right	Scale
4										
5										
6										
7										
8										
9										
10										
11										
12										
13										
14										
15										
16										
17										
18										
19										
20										
21										
22										
23										
24										
25										
26										
27										

Data View Variable View

SPSS Processor is ready



Untitled - SPSS Data Editor

File Edit View Data Transform Analyze Graphs Utilities Window Help



3 : medenhal

	yas	medenhal	gelir	var	var	var	var	var
1								
2								
3								
4								
5								
6								
7								
8								
9								
10								
11								
12								
13								
14								
15								
16								
17								
18								
19								

Data View Variable View

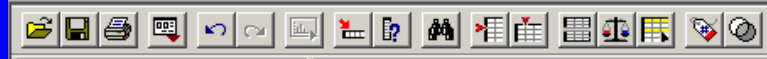


# BBY 207: Sosyal Bilimlerde Araştırma Yöntemleri I

<http://yunus.hacettepe.edu.tr/~tonta/courses/fall2004/bby207/>

Untitled - SPSS Data Editor

File Edit View Data Transform Analyze Graphs Utilities Window Help



3 : yas

	yas	medenhal	gelir	var	var	var
1	35,00	1,00	155,00			
2	25,00	,00	245,00			
3						
4						
5						
6						
7						
8						
9						
10						
11						
12						
13						
14						
15						

Data View Variable View

Use Sets SPSS Processor is ready



Untitled - SPSS Data Editor

File Edit View Data Transform Analyze Graphs Utilities Window Help

SPSS Data Editor Variable View

	Name	Type	Width	Decimals	Label	
1	yas	Numeric	8	0		No
2	medenhal	Numeric	8	0		No
3	gelir	Numeric	8	2		No
4						
5						
6						
7						
8						
9						
10						
11						
12						

Data View Variable View

SPSS Processor is ready



Untitled - SPSS Data Editor

File Edit View Data Transform Analyze Graphs Utilities Window Help

1 : medenhal 1

	yas	medenhal	gelir	var	
1	35	1	155,00		
2	25	0	245,00		
3					
4					
5					
6					
7					
8					
9					
10					
11					

Data View Variable View

SPSS Processor is ready



Untitled - SPSS Data Editor

File Edit View Data Transform Analyze Graphs Utilities Window Help

	Name	Type	Width	Decimals	Label
1	yas	Numeric	8	0	
2	medenhal	Numeric	8	0	
3	gelir	Numeric	8	2	
4	cinsiyet	Numeric	8	2	
5					
6					
7					
8					
9					
10					
11					
12					

Data View Variable View

SPSS Processor is ready



Untitled - SPSS Data Editor

File Edit View Data Transform Analyze Graphs Utilities Window Help

	Name	Type	Width	Decimals	Label
1	yas	Numeric	8	0	
2	medenhal	Numeric	8	0	
3	gelir	Numeric	8	2	
4	cinsiyet	Numeric	8	2	
5					
6					
7					
8					
9					
10					
11					
12					

Variable Type

Numeric

Comma

Dot

Scientific notation Characters: 8

Date

Dollar

Custom currency

String

OK

Cancel

Help

Data View Variable View

SPSS Processor is ready



Untitled - SPSS Data Editor

File Edit View Data Transform Analyze Graphs Utilities Window Help

1 : cinsiyet

	yas	medenhal	gelir	cinsiyet
1	35	1	155,00	
2	25	0	245,00	
3				
4				
5				
6				
7				
8				
9				
10				
11				

Data View Variable View

SPSS Processor is ready





Untitled - SPSS Data Editor

File Edit View Data Transform Analyze Graphs Utilities Window Help

	Name	Type	Width	Decimals	Label	Value
1	yas	Numeric	8	0	Yanıtlayanın yası	None
2	medenhal	Numeric	8	0	Medeni Hâl	None
3	gelir	Numeric	8	2	Aylık gelir	None
4	cinsiyet	String	8	0	Cinsiyet	None
5						
6						
7						
8						
9						
10						
11						
12						
13						
14						
15						

Data View Variable View

SPSS Processor is ready



Untitled - SPSS Data Editor

File Edit View Data Transform Analyze Graphs Utilities Window Help

	Name	Type	Width	Decimals	Label	Value
1	yas	Numeric	8	0	Yanıtlayanın yasi	None
2	medenhal	Numeric	8	0	Medeni Hâl	None
3	gelir	Dollar	7	2	Aylık gelir	None
4	cinsiyet	String	8	0	Cinsiyet	None
5						
6						
7						
8						
9						
10						
11						
12						
13						
14						
15						

Variable Type

Numeric

Comma

Dot

Scientific notation

Date

Dollar

Custom currency

String

Width: 7

Decimal Places: 2

OK Cancel Help

Data View Variable View

SPSS Processor is ready



Untitled - SPSS Data Editor

File Edit View Data Transform Analyze Graphs Utilities Window Help

T1 : cinsiyet

	yas	medenhal	gelir	cinsiyet	var	var
1	35	1	\$155.00			
2	25	0	\$245.00			
3						
4						
5						
6						
7						
8						
9						
10						
11						
12						
13						
14						
15						

Data View / Variable View

SPSS Processor is ready



Untitled - SPSS Data Editor

File Edit View Data Transform Analyze Graphs Utilities Window Help

	Name	Type	Width	Decimals	Label	Values	
1	yas	Numeric	8	0	Yanıtlayanın yası	None	Ne
2	medenhal	Numeric	8	0	Medeni Hâl	None	Ne
3	gelir	Dollar	7	2	Aylık gelir	None	Ne
4	cinsiyet	String	8	0	Cinsiyet	None	Ne
5							
6							
7							
8							
9							
10							
11							
12							
13							
14							
15							

Data View Variable View

SPSS Processor is ready



Untitled - SPSS Data Editor

File Edit View Data Transform Analyze Graphs Utilities Window Help

	Width	Decimals	Label	Values	Missing	Column
1	8	0	Yanıtlayanın yaşı	None	None	8
2	8	0	Medeni Hâl	None	None	8
3	7	2	Aylık gelir	None	None	8
4	8	0	Cinsiyet	None	None	8
5						
6						
7						
8						
9						
10						
11						
12						
13						
14						
15						

Value Labels

Value Labels:

Value:

Value Label:

Add

Change

Remove

OK

Cancel

Help

Data View Variable View

SPSS Processor is ready



Untitled - SPSS Data Editor

File Edit View Data Transform Analyze Graphs Utilities Window Help

	Width	Decimals	Label	Values	Missing	Column
1	8	0	Yanıtlayanın yaşı	None	None	8
2	8	0	Medeni Hâl	None	None	8
3	7	2	Aylık gelir	None	None	8
4	8	0	Cinsiyet	None	None	8
5						
6						
7						
8						
9						
10						
11						
12						
13						
14						
15						

Value Labels

Value Labels:

Value: 0

Value Label: bekâr

Add

Change

Remove

OK

Cancel

Help

Data View Variable View

SPSS Processor is ready



Untitled - SPSS Data Editor

File Edit View Data Transform Analyze Graphs Utilities Window Help

	Width	Decimals	Label	Values	Missing	Column
1	8	0	Yanıtlayanın yaşı	None	None	8
2	8	0	Medeni Hâl	None	None	8
3	7	2	Aylık gelir	None	None	8
4	8	0	Cinsiyet	None	None	8
5						
6						
7						
8						
9						
10						
11						
12						
13						
14						
15						

Value Labels

Value Labels:

Value: 2

Value Label: boşanmış

Add

Change

Remove

0 = "bekâr"  
1 = "evli"

OK  
Cancel  
Help

Data View Variable View

SPSS Processor is ready



Untitled - SPSS Data Editor

File Edit View Data Transform Analyze Graphs Utilities Window Help

T1: medenhal 1

	yas	medenhal	gelir	cinsiyet	var	var
1	35	1	\$155.00			
2	25	0	\$245.00			
3						
4						
5						
6						
7						
8						
9						
10						
11						
12						
13						
14						
15						

Data View Variable View

SPSS Processor is ready





Untitled - SPSS Data Editor

File Edit View Data Transform Analyze Graphs Utilities Window Help

1 : medenhal

	s	medenhal	gelir	cinsiyet	var	var
1	35	1	\$155.00			
2	25	0	\$245.00			
3						
4						
5						
6						
7						
8						
9						
10						
11						
12						
13						
14						
15						

Data View Variable View

Value Labels

SPSS Processor is ready



Untitled - SPSS Data Editor

File Edit View Data Transform Analyze Graphs Utilities Window Help



1 : medenhal

	yas	medenhal	gelir	cinsiyet	var	var
1	35	evli	\$155.00			
2	25	bekâr	\$245.00			
3						
4						
5						
6						
7						
8						
9						
10						
11						
12						
13						
14						

Data View Variable View

SPSS Processor is ready



Untitled - SPSS Data Editor

File Edit View Data Transform Analyze Graphs Utilities Window Help

	Width	Decimals	Label	Values	Missing	Column
1	8	0	Yanıtlayanın yaşı	None	None	8
2	8	0	Medeni Hâl	{0, bekâr}...	None	8
3	7	2	Aylık gelir	None	None	8
4	8	0	Cinsiyet	None	None	8
5						
6						
7						
8						
9						
10						
11						
12						
13						
14						
15						

**Value Labels**

Value Labels:

Value:

Value Label:

Add Change Remove

E = "Erkek"  
K = "Kadın"

OK Cancel Help

Data View Variable View

SPSS Processor is ready



Untitled - SPSS Data Editor

File Edit View Data Transform Analyze Graphs Utilities Window Help

2 : cinsiyet

	yas	medenhal	gelir	cinsiyet	var	var
1	35	evli	\$155.00	Erkek		
2	25	bekâr	\$245.00			
3				Erkek		
4				Kadın		
5						
6						
7						
8						
9						
10						
11						
12						
13						
14						
15						

Data View Variable View

SPSS Processor is ready



Untitled - SPSS Data Editor

File Edit View Data Transform Analyze Graphs Utilities Window Help

	Decimals	Label	Values	Missing	Columns	Ali
1	0	Yanıtlayanın yaşı	None	None	8	Right
2	0	Medeni Hâl	{0, bekâr}...	None	8	Right
3	2	Aylık gelir	None	None	8	Right
4	0	Cinsiyet	{E, Erkek}...	None	8	Left
5						
6						
7						
8						
9						
10						
11						
12						
13						
14						
15						

Data View Variable View

SPSS Processor is ready



Untitled - SPSS Data Editor

File Edit View Data Transform Analyze Graphs Utilities Window Help

	Label	Values	Missing	Columns	Align	M
1	Yanıtlayanın yaşı	None	None	8	Right	Scale
2	Medeni Hâl	{0, beka			Right	Scale
3	Aylık gelir	None			Right	Scale
4	Cinsiyet	{E, Erke			Left	Nom
5						
6						
7						
8						
9						
10						
11						
12						
13						
14						
15						

Missing Values

No missing values

Discrete missing values

999

Range plus one optional discrete missing value

Low: High:

Discrete value:

OK Cancel Help

Data View Variable View

SPSS Processor is ready



Untitled - SPSS Data Editor

File Edit View Data Transform Analyze Graphs Utilities Window Help

	Label	Values	Missing	Columns	Align	M
1	Yanıtlayanın yaşı	{999, Ceva	999	8	Right	Scale
2	Medeni Hâl	{0, bekâr}...	None	8	Right	Scale
3	Aylık gelir	None	None	8	Right	Scale
4	Cinsiyet	{E, Erkek}...	None	8	Left	Nom
5						
6						
7						
8						
9						
10						
11						
12						
13						
14						
15						

Missing Values

No missing values

Discrete missing values

Range plus one optional discrete missing value

Low:  High:

Discrete value:

OK Cancel Help

Data View Variable View

SPSS Processor is ready



Untitled - SPSS Data Editor

File Edit View Data Transform Analyze Graphs Utilities Window Help

	Label	Values	Missing	Columns	Align	M
1	Yanıtlayanın yaşı	{999, Ceva	999	8	Right	Scale
2	Medeni Hâl	{0, bekâr}...	None	8	Right	Scale
3	Aylık gelir	None	None	8	Right	Scale
4	Cinsiyet	{E, Erkek}	CY	8	Left	Nom
5						
6						
7						
8						
9						
10						
11						
12						
13						
14						
15						

Value Labels

Value Labels

Value: CY

Value Label: Cevap Yok

Add

Change

Remove

E = "Erkek"  
K = "Kadın"

OK

Cancel

Help

Data View Variable View

SPSS Processor is ready





Untitled - SPSS Data Editor

File Edit View Data Transform Analyze Graphs Utilities Window Help

	Name	Type	Width	Decimals	Label	Values	
1	yas	Numeric	8	0	Yanıtlayanın yası	{999, Ceva	99
2	medenhal	Numeric	8	0	Medeni hâl	{0, bekâr}...	No
3	gelir	Dollar	7	2	Aylık gelir	None	No
4	cinsiyet	String	8	0	Cinsiyet	{E, Erkek}...	C
5	evlnmyas	Numeric	8	2	Evlenme yası	None	No
6							
7							
8							
9							
10							
11							
12							
13							
14							
15							

Data View Variable View

SPSS Processor is ready



Untitled - SPSS Data Editor

File Edit View Data Transform Analyze Graphs Utilities Window Help

Undo Modify Variables Ctrl+Z  
Redo Ctrl+R  
Cut Ctrl+X  
Copy Ctrl+C  
Paste Ctrl+V  
Paste Variables...  
Clear Del  
Find... Ctrl+F  
Options...

		Width	Decimals	Label	Values	Missing
3	Dollar	8	0	Yanıtlayanın yası	{999, Cev ...	999
4	String	8	0	Medeni hâl	{0, bekâr}...	None
5	Numeric	7	2	Aylık gelir	None	None
6						
7						
8						
9						
10						
11						
12						
13						
14						
15						

Data View Variable View

Copy SPSS Processor is ready



Untitled - SPSS Data Editor

File Edit View Data Transform Analyze Graphs Utilities Window Help

Undo Modify Variables Ctrl+Z  
Redo Ctrl+R  
Cut Ctrl+X  
Copy Ctrl+C  
Paste Ctrl+V  
Paste Variables...  
Clear Del  
Find... Ctrl+F  
Options...

		Width	Decimals	Label	Values	Missing
3	Dollar	8	0	Yanıtlayanın yası	{999, Ceva	999
4	String	8	0	Medeni hâl	{0, bekâr}...	None
5	Numeric	7	2	Aylık gelir	None	None
6						
7						
8						
9						
10						
11						
12						
13						
14						
15						

Data View Variable View

Paste SPSS Processor is ready



Untitled - SPSS Data Editor

File Edit View Data Transform Analyze Graphs Utilities Window Help

SPSS Data Editor Variable View

	Type	Width	Decimals	Label	Values	Missing
1	Numeric	8	0	Yanıtlayanın yaşı	{999, Ceva	999
2	Numeric	8	0	Medeni hâl	{0, bekâr}...	None
3	Dollar	7	2	Aylık gelir	None	None
4	String	8	0	Cinsiyet	{E, Erkek}...	CY
5	Numeric	8	2	Evlenme yaşı	{999,00, Ce	None
6	Numeric	8	2		{999,00, Ce	None
7	Numeric	8	2		{999,00, Ce	None
8						
9						
10						
11						
12						
13						
14						
15						

SPSS Processor is ready

Y.T.



Untitled - SPSS Data Editor

File Edit View Data Transform Analyze Graphs Utilities Window Help

Undo Paste Variable Attributes Ctrl+Z  
Redo Ctrl+R  
Cut Ctrl+X  
Copy Ctrl+C  
Paste Ctrl+V  
Paste Variables...  
Clear Del  
Find... Ctrl+F  
Options...

		Type	Width	Decimals	Label	Values	
3	geirr	Numeric	8	0	Yanıtlayanın yaşı	{999, Ceva	99
4	cinsiyet	String	8	0	Medeni hâl	{0, bekâr}...	N
5	evlnmyas	Numeric	8	2	Aylık gelir	None	N
6	var00003	Numeric	8	2		{999,00, Ce	N
7	var00004	Numeric	8	2		{999,00, Ce	N
8							
9							
10							
11							
12							
13							
14							
15							

Data View Variable View

Copy SPSS Processor is ready



Untitled - SPSS Data Editor

File Edit View Data Transform Analyze Graphs Utilities Window Help

Undo Paste Variable Attributes Ctrl+Z  
Redo Paste Variables Ctrl+R  
Cut Ctrl+X  
Copy Ctrl+C  
Paste Ctrl+V  
Paste Variables...  
Clear Del  
Find... Ctrl+F  
Options...

		Type	Width	Decimals	Label	Values	
3	geirr	Numeric	8	0	Yanıtlayanın yaşı	{999, Ceva	99
4	cinsiyet	String	8	0	Medeni hâl	{0, bekâr}...	No
5	evlnmyas	Numeric	8	2	Aylık gelir	None	No
6	var00003	Numeric	8	2	Cinsiyet	{E, Erkek}...	C
7	var00004	Numeric	8	2	Evlenme yaşı	{999,00, Ce	No
8						{999,00, Ce	No
9							
10							
11							
12							
13							
14							
15							

Data View Variable View

Paste SPSS Processor is ready



Untitled - SPSS Data Editor

File Edit View Data Transform Analyze Graphs Utilities Window Help

	Name	Type	Width	Decimals	Label	Values	
1	yas	Numeric	8	0	Yanıtlayanın yası	{999, Ceva	99
2	medenhal	Numeric	8	0	Medeni hâl	{0, bekâr}...	No
3	gelir	Dollar	7	2	Aylık gelir	None	No
4	cinsiyet	String	8	0	Cinsiyet	{E, Erkek}...	C
5	evlnmyas	Numeric	8	2	Evlenme yası	{999,00, Ce	No
6	var00003	Numeric	8	2		{999,00, Ce	No
7	var00004	Numeric	8	2		{999,00, Ce	No
8	var00006	Numeric	8	0	Medeni hâl	{0, bekâr}...	No
9							
10							
11							
12							
13							
14							
15							

Data View Variable View

SPSS Processor is ready



Untitled - SPSS Data Editor

File Edit View Data Transform Analyze Graphs Utilities Window Help

SPSS Processor is ready

	Values	Missing	Columns	Align	Measure
1	{999, Ceva	999	8	Right	Scale
2	{0, bekâr}...	None	8	Right	Scale
3	None	None	8	Right	Scale
4	{E, Erkek}...	CY	8	Left	Nominal
5	{999,00, Ce	None	8	Right	Scale
6	{999,00, Ce	None	8	Right	Scale
7	{999,00, Ce	None	8	Right	Scale
8	{0, bekâr}...	None	8	Right	Scale
9				Left	
10				Right	
11				Center	
12					
13					
14					
15					





Untitled - SPSS Data Editor

File Edit View Data Transform Analyze Graphs Utilities Window Help

	Values	Missing	Columns	Align	Measure
1	{999, Ceva	999	8	Right	Scale
2	{0, bekâr}...	None	8	Right	Scale
3	None	None	8	Right	Scale
4	{E, Erkek}...	CY	8	Left	Nominal
5	{999,00, Ce	None	8	Right	Scale
6	{999,00, Ce	None	8	Right	Scale
7	{999,00, Ce	None	8	Right	Scale
8	{0, bekâr}...	None	8	Right	Scale
9					Scale
10					Ordinal
11					Nominal
12					
13					
14					
15					

Data View Variable View

SPSS Processor is ready



Untitled - SPSS Data Editor

File Edit View Data Transform Analyze Graphs Utilities Window Help

7 : gelir 351

	yas	medenhal	gelir	cinsiyet	var	var
1	35	evli	\$155.00	Erkek		
2	25	bekâr	\$245.00	Kadın		
3	15	bekâr	\$255.00	Erkek		
4	65	evli	\$100.00	Kadın		
5	45	bosanmis	\$185.00	Cevap Yok		
6	22	bekâr	\$300.00	Erkek		
7	32	evli	\$351.00	Kadın		
8	36	evli	\$187.00	Erkek		
9	45	evli	\$98.00	Kadın		
10	18	bekâr	\$55.00	Cevap Yok		
11	17	bekâr	\$25.00	Erkek		
12	33	bosanmis	\$65.00	Erkek		
13	28	evli	\$197.00	Kadın		
14	29	evli	\$339.00	Kadın		
15						

Data View Variable View

SPSS Processor is ready



Untitled - SPSS Data Editor

File Edit View Data Transform Analyze Graphs Utilities Window Help

7 : gelir

Value Labels

	medenhal	gelir	cinsiyet	var	var
1	35	1	\$155.00	E	
2	25	0	\$245.00	K	
3	15	0	\$255.00	E	
4	65	1	\$100.00	K	
5	45	2	\$185.00	CY	
6	22	0	\$300.00	E	
7	32	1	\$351.00	K	
8	36	1	\$187.00	E	
9	45	1	\$98.00	K	
10	18	0	\$55.00	CY	
11	17	0	\$25.00	E	
12	33	2	\$65.00	E	
13	28	1	\$197.00	K	
14	29	1	\$339.00	K	
15					

Data View Variable View

Value Labels

SPSS Processor is ready



Untitled - SPSS Data Editor

File Edit View Data Transform Analyze Graphs Utilities Window Help

7 : cinsiyet

	yas			yet	var	var	var	var	var
1	35								
2	25								
3	15								
4	65								
5	45								
6	22								
7	32								
8	36	1	\$187.00	E					
9	45	1	\$98.00	K					
10	18	0	\$55.00	CY					
11	17	0	\$25.00	E					
12	33	2	\$65.00	E					
13	28	1	\$197.00	K					
14	29	1	\$339.00	K					
15									
16									
17									
18									
19									
20									

Reports  
Descriptive Statistics  
Tables  
Compare Means  
General Linear Model  
Mixed Models  
Correlate  
Regression  
Loglinear  
Classify  
Data Reduction  
Scale  
Nonparametric Tests  
Time Series  
Survival  
Multiple Response  
Missing Value Analysis...

Frequencies...  
Descriptives...  
Explore...  
Crosstabs...  
Ratio...

Data View Variable View

Frequencies

SPSS Processor is ready



Untitled - SPSS Data Editor

File Edit View Data Transform Analyze Graphs Utilities Window Help

7 : cinsiyet K

	yas	medenhal	gelir	cinsiyet	var	var	var	var	var
1	35	1	\$155.00	E					
2	25	0	\$245.00	K					
3									
4									
5									
6									
7									
8									
9									
10									
11									
12									
13	28	1	\$197.00	K					
14	29	1	\$339.00	K					
15									
16									
17									
18									
19									
20									

**Frequencies**

Variable(s):

- Yanıtlayanın yası [yas]
- Medeni hâl [medenhal]
- Aylık gelir [gelir]
- Cinsiyet [cinsiyet]

Display frequency tables

Statistics... Charts... Format...

OK Paste Reset Cancel Help

Data View Variable View

SPSS Processor is ready



Untitled - SPSS Data Editor

File Edit View Data Transform Analyze Graphs Utilities Window Help

15:

	yas	medenhal	gelir	cinsiyet	var	var	var	var	var
1	35	1	\$155.00	E					
2	25	0	\$245.00	K					
3									
4									
5									
6									
7									
8									
9									
10									
11									
12									
13	28	1	\$197.00	K					
14	29	1	\$339.00	K					
15									
16									
17									
18									
19									
20									

**Frequencies**

Yanıtlayanın yasi [yas]  
Medeni hâl [medenhal]  
Aylık gelir [gelir]  
Cinsiyet [cinsiyet]

Variable(s):

What's This?  
Variable Information

OK  
Paste  
Reset  
Cancel  
Help

Display frequency tables

Statistics... Charts... Format...

Data View Variable View

SPSS Processor is ready



Untitled - SPSS Data Editor

File Edit View Data Transform Analyze Graphs Utilities Window Help

15:

	yas	medenhal	gelir	cinsiyet	var	var	var	var	var
1	35	1	\$155.00	E					
2	25	0	\$245.00	K					
3									
4									
5									
6									
7									
8									
9									
10									
11									
12									
13	28	1	\$197.00	K					
14	29	1	\$339.00	K					
15									
16									
17									
18									
19									
20									

15:

Yanıtlayanın yasi [yas]  
Medeni hâl [medenhal]  
Aylık gelir [gelir]  
Cinsiyet [cinsiyet]

Variable(s):

OK  
Paste  
Reset  
Cancel  
Help

Display frequency tables

Statistics... Charts... Form

Medeni hâl  
Name: medenhal  
Measurement Scale

Value labels: 0 bekâr  
1 evli  
2 bosanmis

Data View Variable View

SPSS Processor is ready



Untitled - SPSS Data Editor

File Edit View Data Transform Analyze Graphs Utilities Window Help

13:

	yas	medenhal	gelir	cinsiyet	var	var	var	var	var
1	35	1	\$155.00	E					
2									
3									
4									
5									
6									
7									
8									
9									
10									
11	17	0	\$25.00	E					
12	33	2	\$65.00	E					
13	28	1	\$197.00	K					
14	29	1	\$339.00	K					
15									
16									
17									
18									
19									
20									

13:

1  |  |  |  |  |  |  |  |  |

2  |  |  |  |  |  |  |  |  |

3  |  |  |  |  |  |  |  |  |

4  |  |  |  |  |  |  |  |  |

5  |  |  |  |  |  |  |  |  |

6  |  |  |  |  |  |  |  |  |

7  |  |  |  |  |  |  |  |  |

8  |  |  |  |  |  |  |  |  |

9  |  |  |  |  |  |  |  |  |

10  |  |  |  |  |  |  |  |  |

11 17 | 0 | \$25.00 | E |  |  |  |  |  |

12 33 | 2 | \$65.00 | E |  |  |  |  |  |

13 28 | 1 | \$197.00 | K |  |  |  |  |  |

14 29 | 1 | \$339.00 | K |  |  |  |  |  |

15  |  |  |  |  |  |  |  |  |

16  |  |  |  |  |  |  |  |  |

17  |  |  |  |  |  |  |  |  |

18  |  |  |  |  |  |  |  |  |

19  |  |  |  |  |  |  |  |  |

20  |  |  |  |  |  |  |  |  |

SPSS Processor is ready

Yanıtlayanın yaşı [yas]  
Cinsiyet [cinsiyet]

Variable(s):  
Medeni hâl [medenhal]  
Aylık gelir [gelir]

OK  
Paste  
Reset  
Cancel  
Help

Display frequency tables

Statistics... Charts... Format...





Output1 - SPSS Viewer

File Edit View Insert Format Analyze Graphs Utilities Window Help

Output

- Output
  - Frequencies
    - Title
    - Notes
    - Statistics
    - Frequency Table
  - Frequencies
    - Title
    - Notes
    - Statistics
    - Frequency Table
  - Frequencies
    - Title
    - Medeni hâl
    - Aylık gelir

### Frequencies

Statistics

		Medeni hâl	Aylık gelir
N	Valid	14	14
	Missing	0	0

→ Frequencies

Statistics

		Medeni hâl	Aylık gelir
N	Valid	14	14
	Missing	0	0

### Frequency Table

Medeni hâl

		Frequency	Percent	Valid Percent	Cumulative Percent
Valid	bekâr	5	35,7	35,7	35,7
	evli	7	50,0	50,0	85,7
	bosanmis	2	14,3	14,3	100,0
	Total	14	100,0	100,0	

SPSS Processor is ready



Output4 - SPSS Viewer

File Edit View Insert Format Analyze Graphs Utilities Window Help

Output

- Output
  - Frequencies
    - Title
    - Notes
    - Statistics
    - Frequency Table

### Frequencies

Statistics

		Medeni hâl	Aylık gelir
N	Valid	14	14
	Missing	0	0

Double click to edit Pivot Table

SPSS Processor is ready

H: 74 , W: 197 pt.



## Output4 - SPSS Viewer

File Edit View Insert Format Analyze Graphs Utilities Window Help



- Output
  - Frequencies
    - Title
    - Notes
    - Statistics
  - Frequency Table
    - Title
    - Medeni hâl
    - Aylık gelir

### Frequency Table

#### Medeni hâl

	Frequency	Percent	Valid Percent	Cumulative Percent
Valid bekâr	5	35,7	35,7	35,7
evli	7	50,0	50,0	85,7
bosanmış	2	14,3	14,3	100,0
Total	14	100,0	100,0	

#### Aylık gelir

	Frequency	Percent	Valid Percent	Cumulative Percent
Valid \$25.00	1	7,1	7,1	7,1
\$55.00	1	7,1	7,1	14,3
\$65.00	1	7,1	7,1	21,4
\$98.00	1	7,1	7,1	28,6
\$100.00	1	7,1	7,1	35,7
\$155.00	1	7,1	7,1	42,9
\$185.00	1	7,1	7,1	50,0
\$187.00	1	7,1	7,1	57,1
\$197.00	1	7,1	7,1	64,3
\$245.00	1	7,1	7,1	71,4
\$255.00	1	7,1	7,1	78,6
\$300.00	1	7,1	7,1	85,7
\$339.00	1	7,1	7,1	92,9
\$351.00	1	7,1	7,1	100,0
Total	14	100,0	100,0	



Untitled - SPSS Data Editor

File Edit View Data Transform Analyze Graphs Utilities Window Help

Gallery  
Interactive  
Map  
Bar...  
Line...  
Area...  
Pie...  
High-Low...  
Pareto...  
Control...  
Boxplot...  
Error Bar...  
Scatter...  
Histogram...  
P-P...  
Q-Q...  
Sequence...  
ROC Curve...  
Time Series

	yas	mede	gir	cinsiyet	var	var	var	var	var
1	35		5.00	E					
2	25		5.00	K					
3	15		5.00	E					
4	65		0.00	K					
5	45		5.00	CY					
6	22		0.00	E					
7	32		1.00	K					
8	36		7.00	E					
9	45		8.00	K					
10	18	0	\$55.00	CY					
11	17	0	\$25.00	E					
12	33	2	\$65.00	E					
13	28	1	\$197.00	K					
14	29	1	\$339.00	K					
15									
16									
17									
18									
19									
20									

Data View Variable View

Bar

SPSS Processor is ready



Untitled - SPSS Data Editor

File Edit View Data Transform Analyze Graphs Utilities Window Help

7:

	yas	medenhal	gelir	cinsiyet	var	var	var	var	var
1	35	1	\$155.00	E					
2	25	0	\$245.00	K					
3	15	0	\$255.00	E					
4	65	1	\$100.00						
5	45	2	\$185.00						
6	22	0	\$300.00						
7	32	1	\$351.00						
8	36	1	\$187.00						
9	45	1	\$98.00						
10	18	0	\$55.00						
11	17	0	\$25.00						
12	33	2	\$65.00						
13	28	1	\$197.00						
14	29	1	\$339.00						
15									
16									
17									
18									
19									
20									

Bar Charts

Simple

Clustered

Stacked

Data in Chart Are

Summaries for groups of cases

Summaries of separate variables

Values of individual cases

Define

Cancel

Help

Data View Variable View

SPSS Processor is ready



Output4 - SPSS Viewer

File Edit View Insert Format Analyze Graphs Utilities Window Help

Frequency Table

Medeni hâl

Define Clustered Bar: Summaries for Groups of Cases

Bars Represent

N of cases  % of cases

Cum. n of cases  Cum. % of cases

Other summary function

Variable:

Change Summary...

Category Axis:

Define Clusters by:

Template

Use chart specifications from:

File... Titles... Options...

\$255.00	1	7,1	7,1	78,6
\$300.00	1	7,1	7,1	85,7
\$339.00	1	7,1	7,1	92,9
\$351.00	1	7,1	7,1	100,0
Total	14	100,0	100,0	

SPSS Processor is ready



Untitled - SPSS Data Editor

File Edit View Data Transform Analyze Graphs Utilities Window Help

	yas	medenhal	gelir	cinsiyet	var	var	var	var	var
1	35	1	\$155.00	E					
2	25	0	\$245.00	K					
3	15								
4	65								
5	45								
6	22								
7	32								
8	36								
9	45								
10	18								
11	17								
12	33								
13	28								
14	29								
15									
16									
17									
18									
19									
20									

Define Clustered Bar: Summaries for Groups of Cases

Yanıtlayanın yasi [yas]  
Aylık gelir [gelir]

Bars Represent

N of cases  % of cases  
 Cum. n of cases  Cum. % of cases  
 Other summary function

Variable:  
Change Summary...

Category Axis:  
Medeni hâl [medenhal]

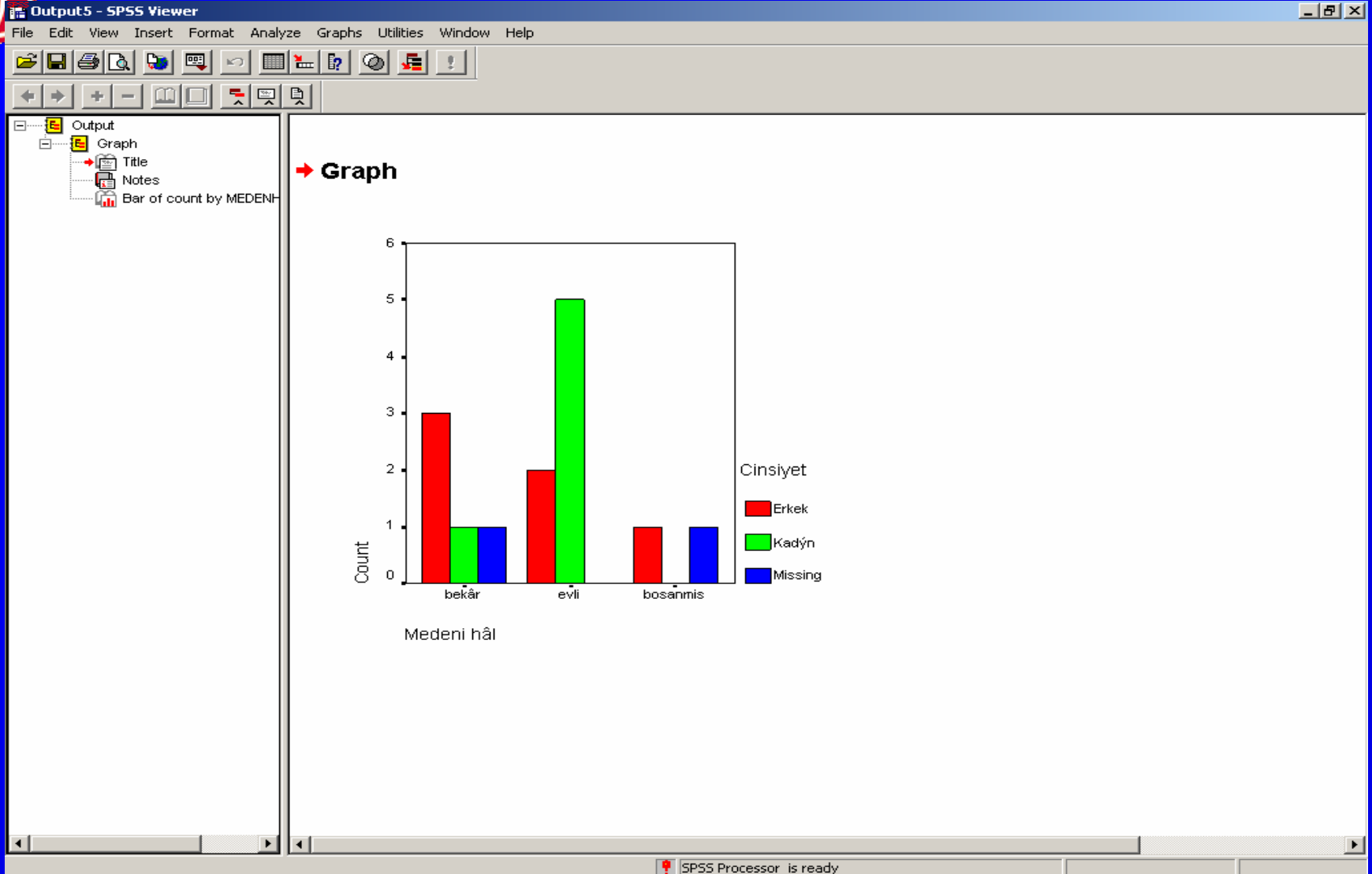
Define Clusters by:  
Cinsiyet [cinsiyet]

Template  
 Use chart specifications from:  
File...

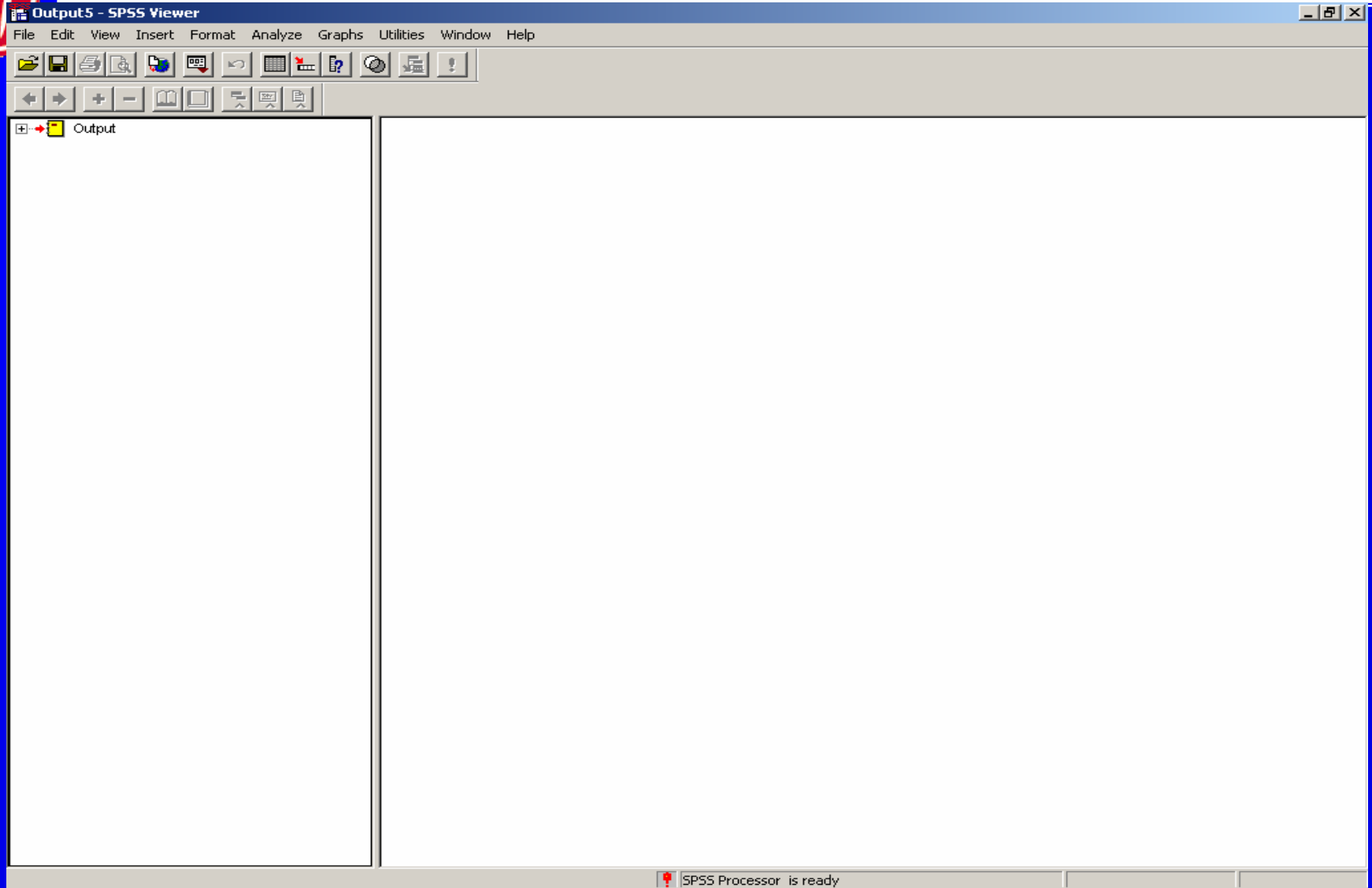
OK  
Paste  
Reset  
Cancel  
Help  
Titles...  
Options...

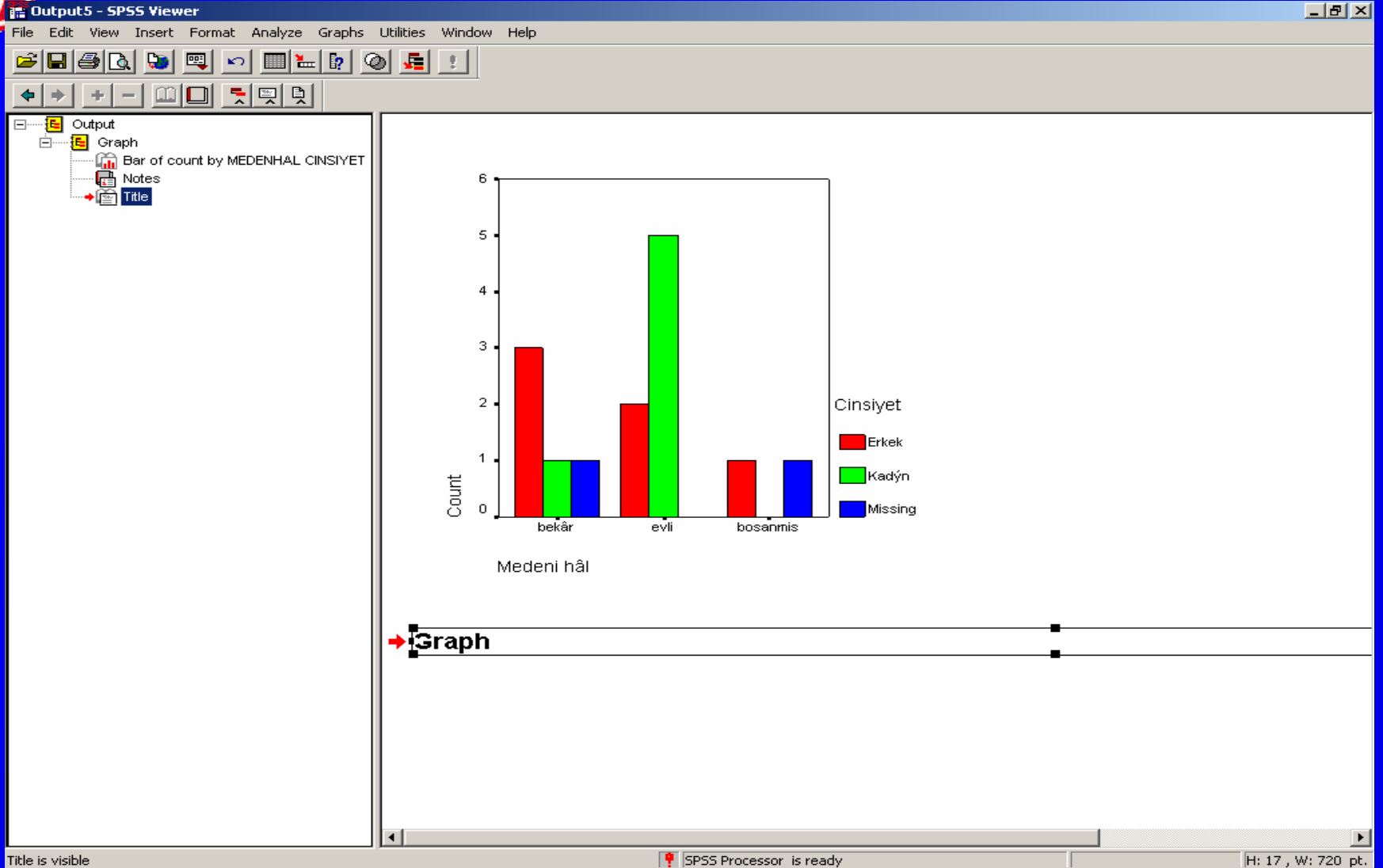
Data View Variable View

SPSS Processor is ready











Output5 - SPSS Viewer

File Edit View Insert Format Analyze Graphs Utilities Window Help

Graph

Bar of count by MEDENHAL CINSIYET

Count

Medeni hâl

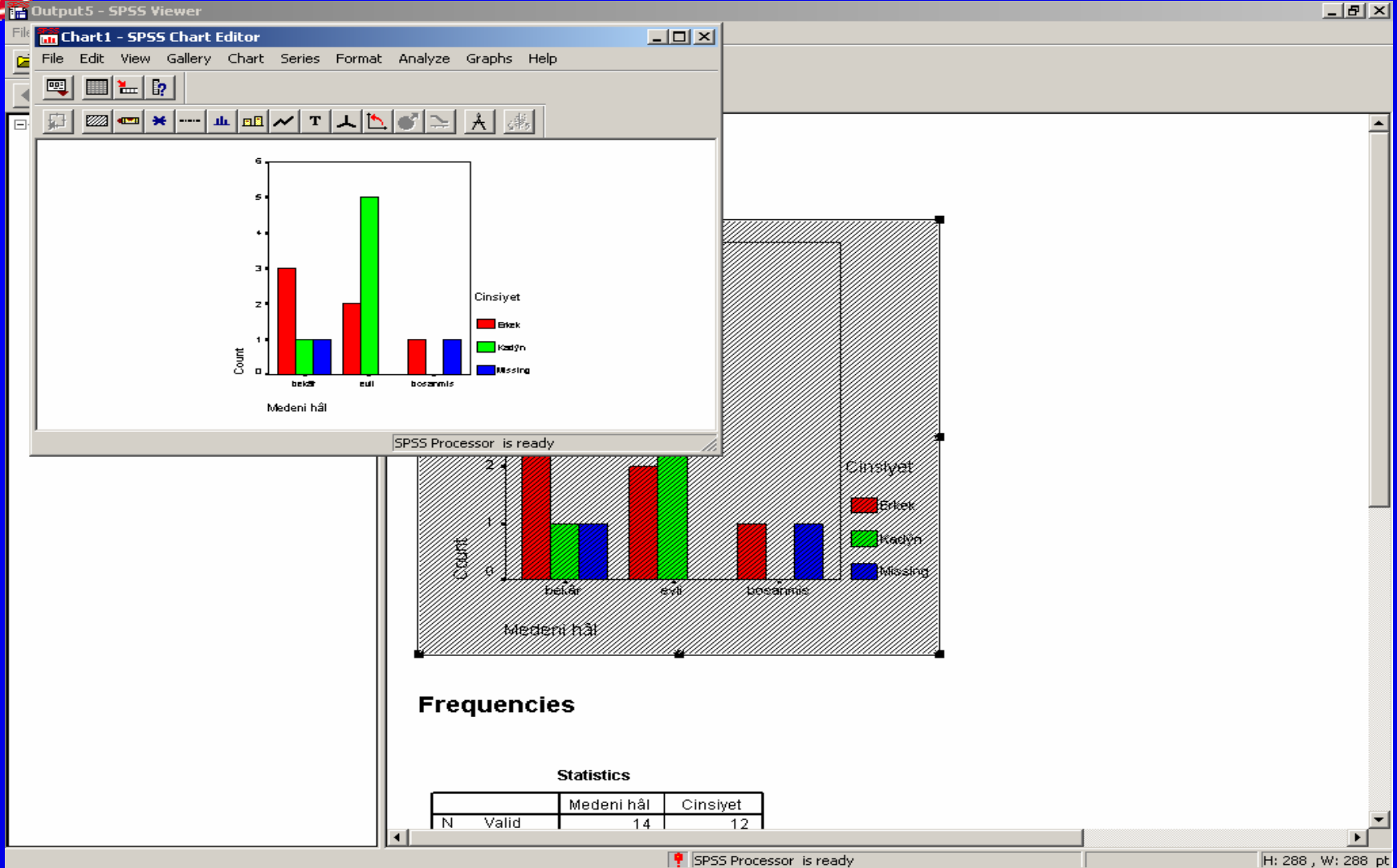
Statistics

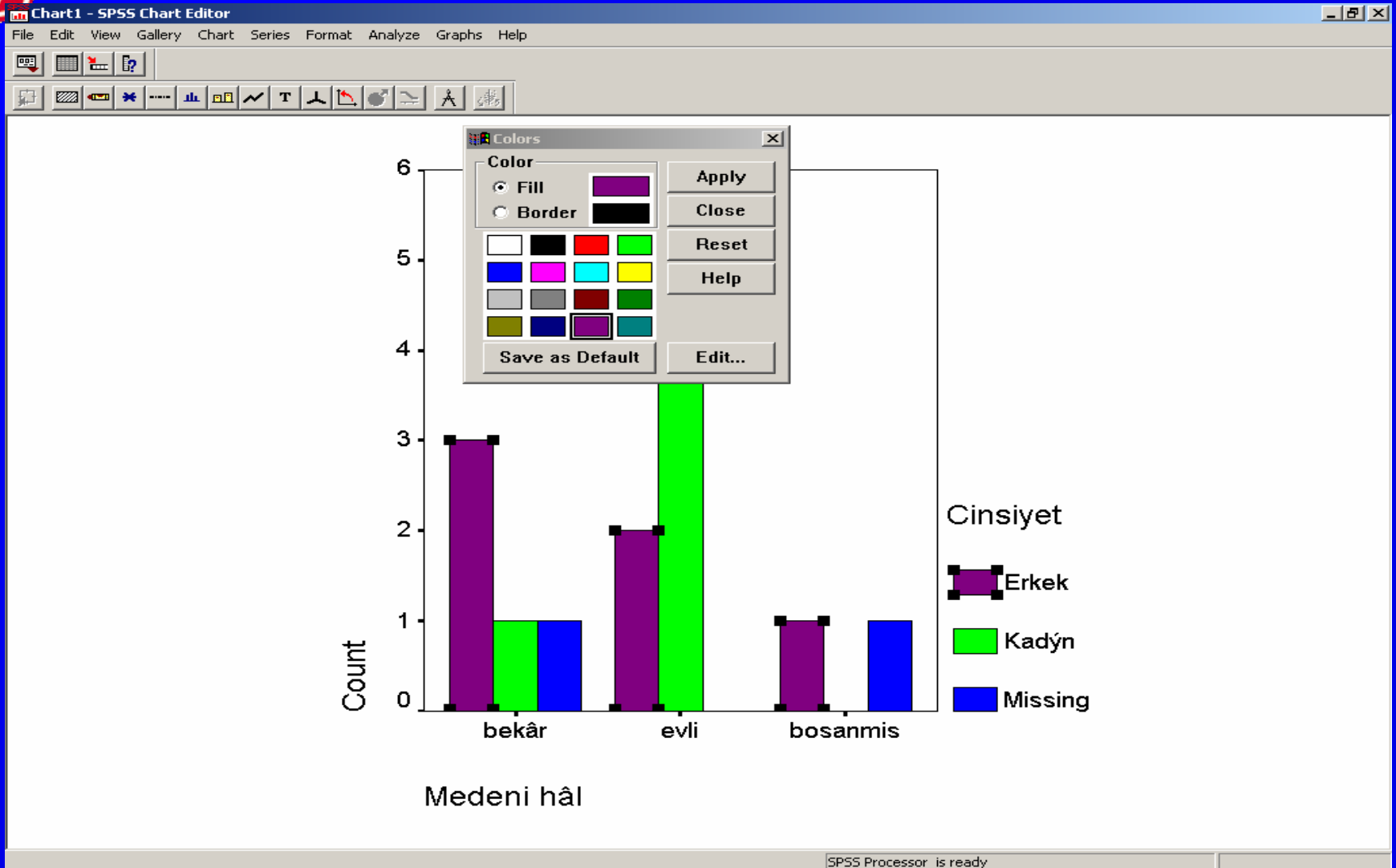
	Medeni hâl	Cinsiyet
N	Valid	14
		12

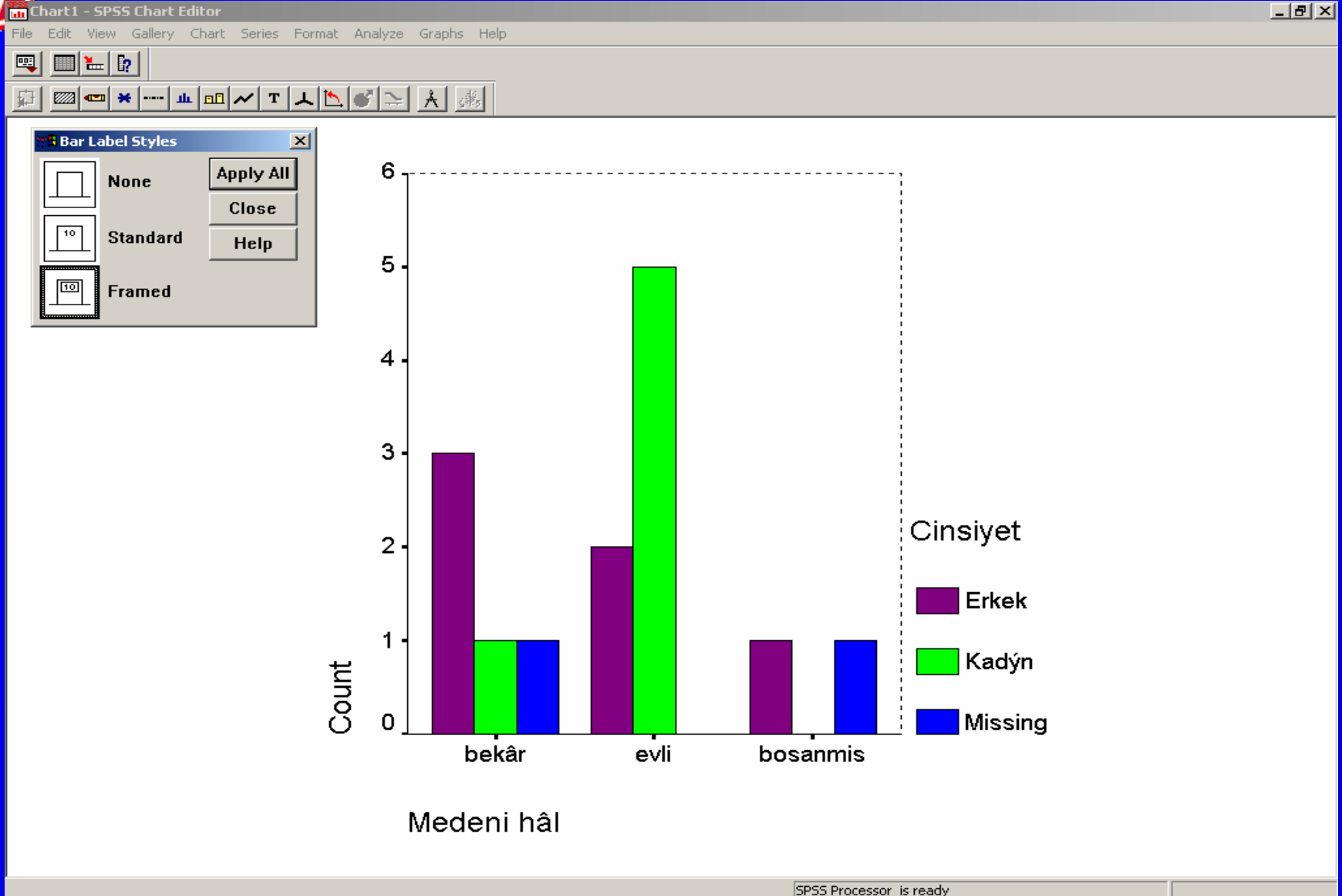
What's This?

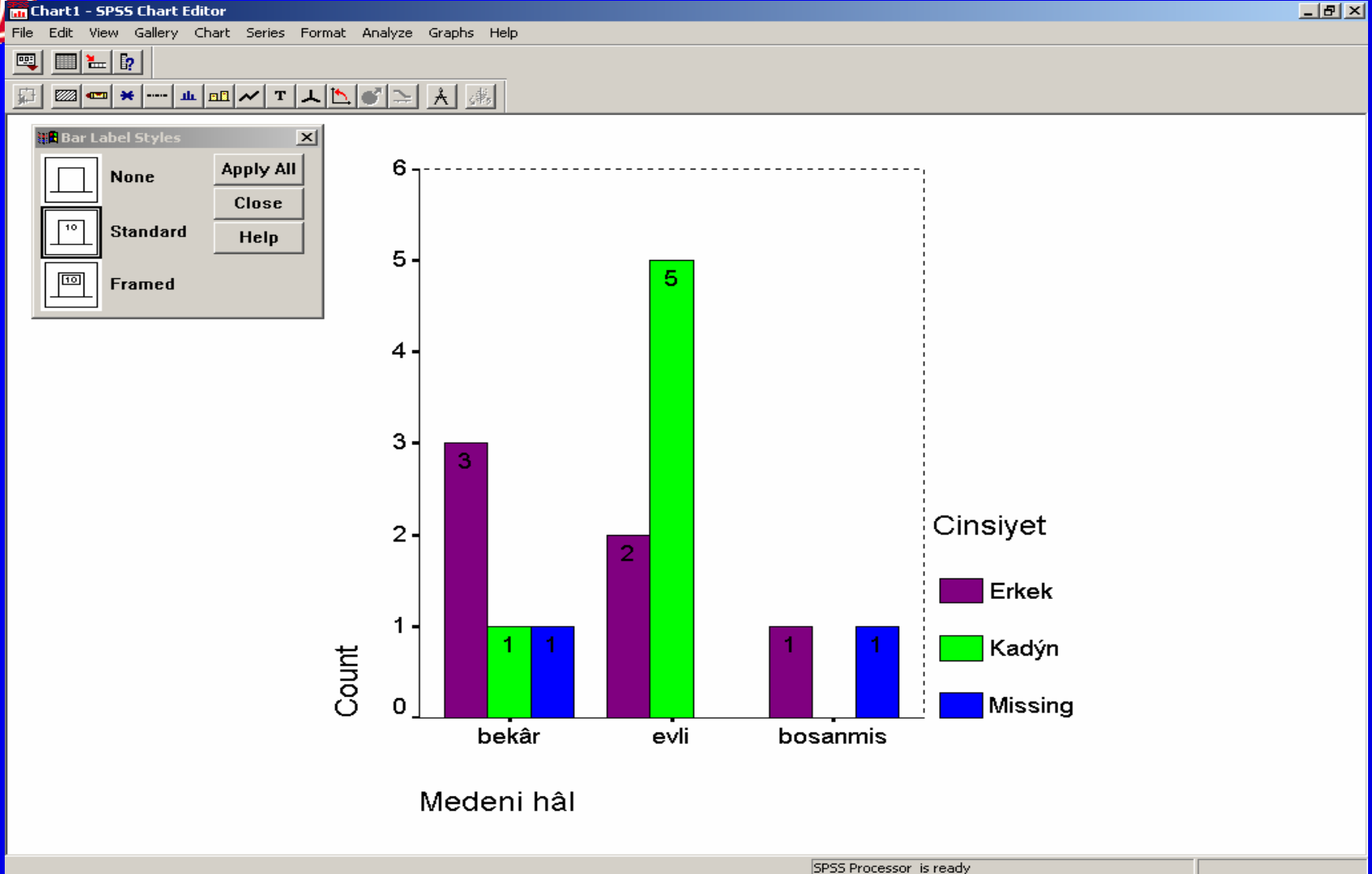
- Cut
- Copy
- Copy objects
- Paste After
- Export...
- SPSS Chart Object
- Open

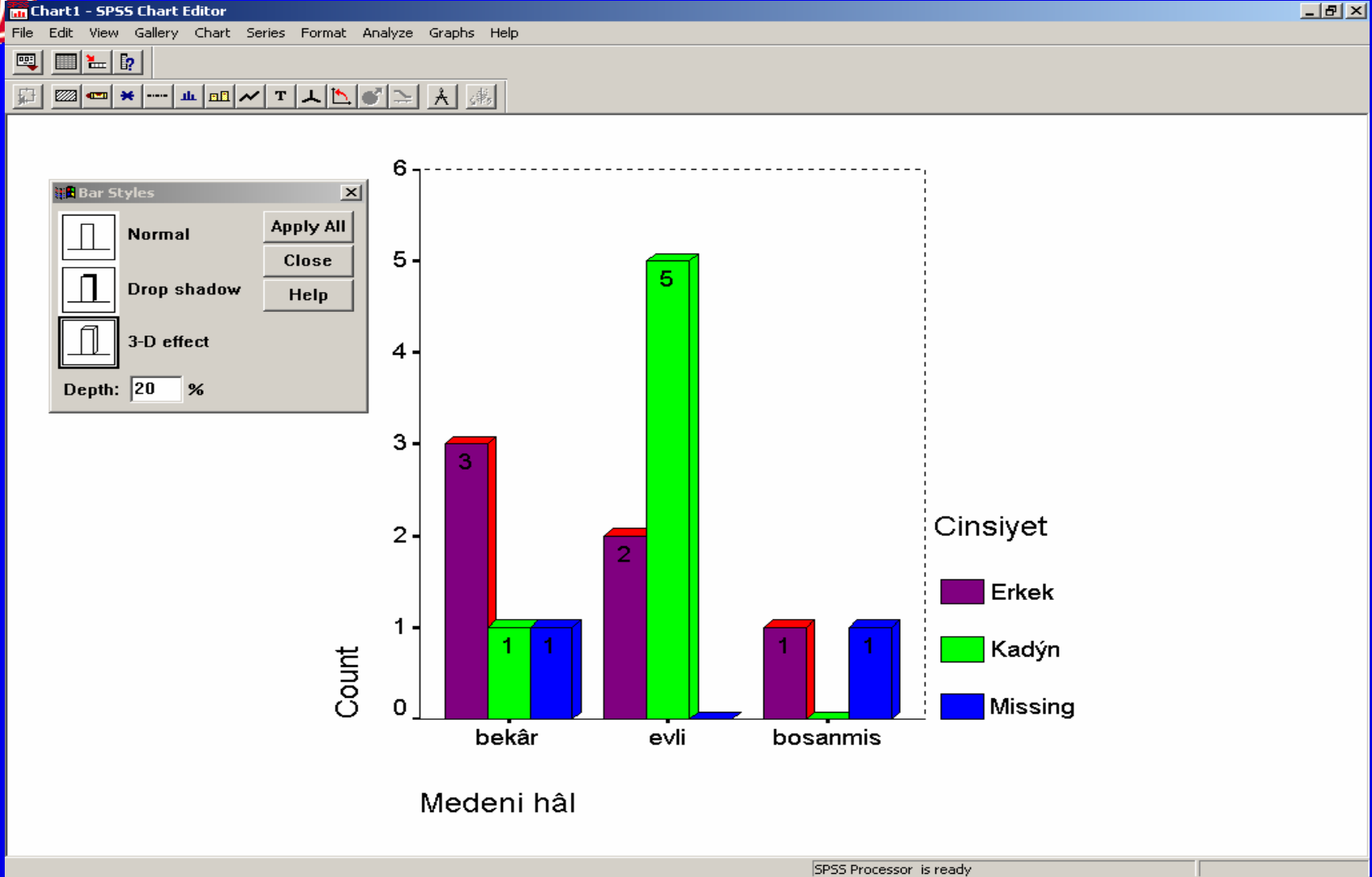
FloatCellsOnDisplay | SPSS Processor is ready | H: 288 , W: 288 pt



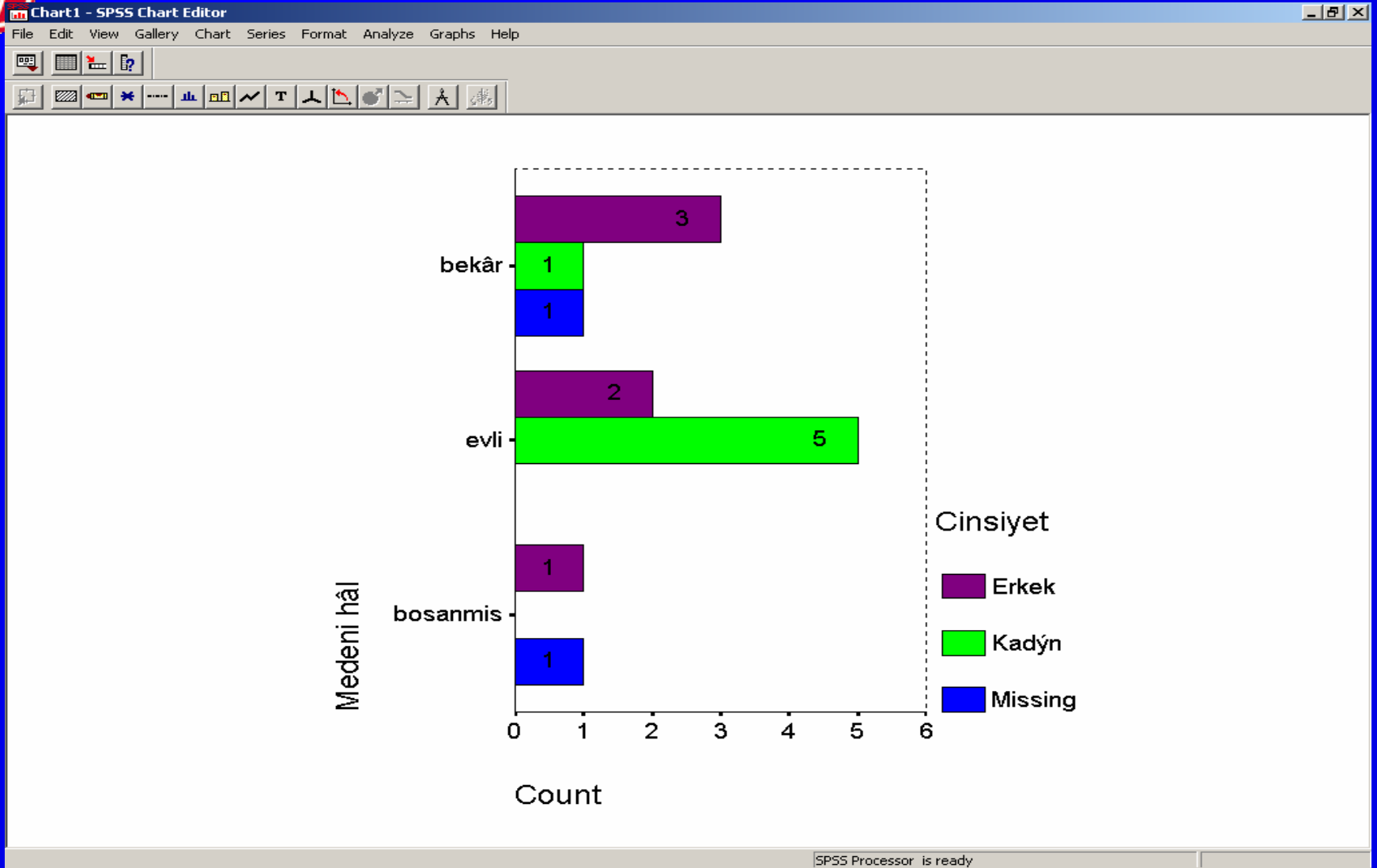


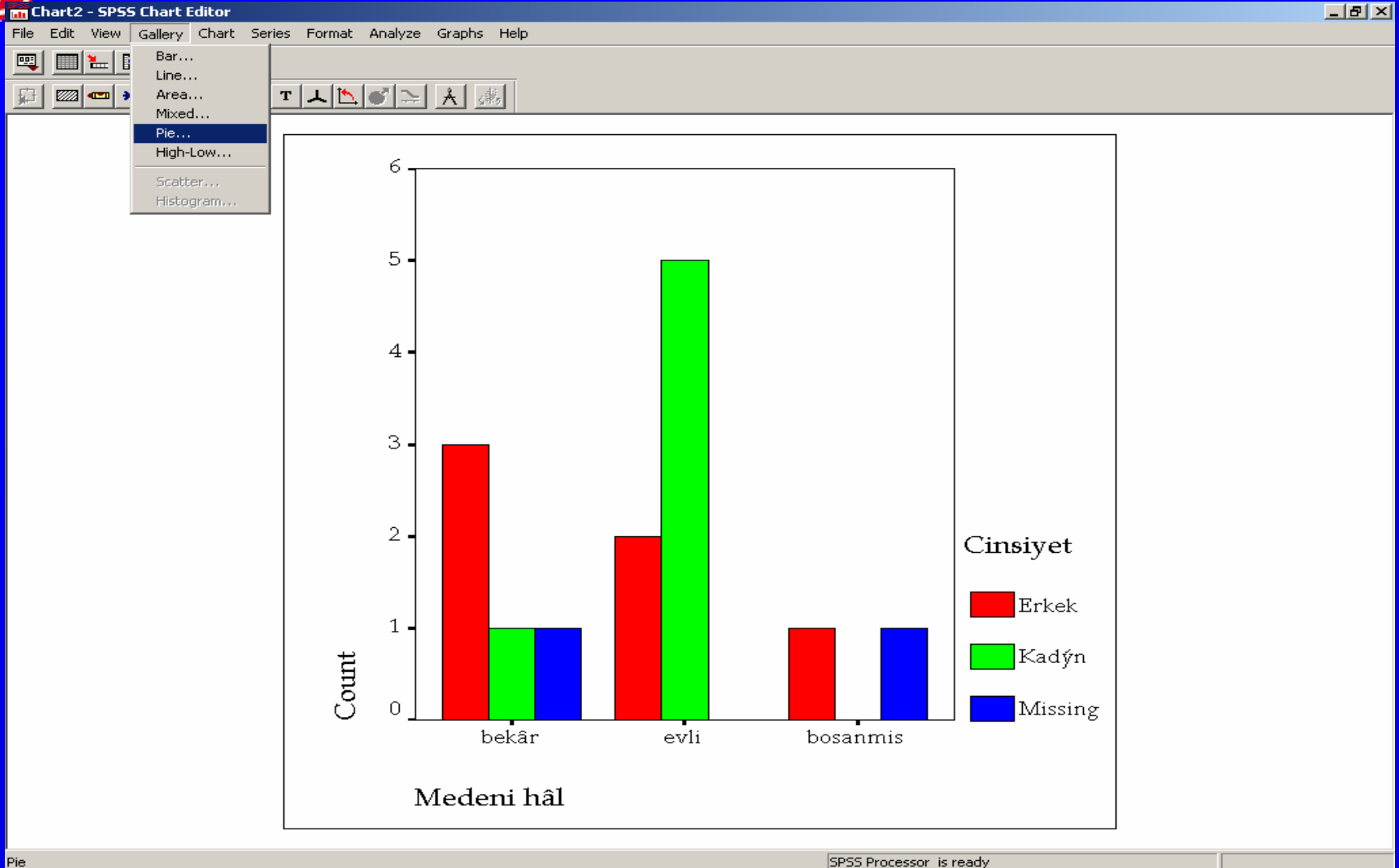


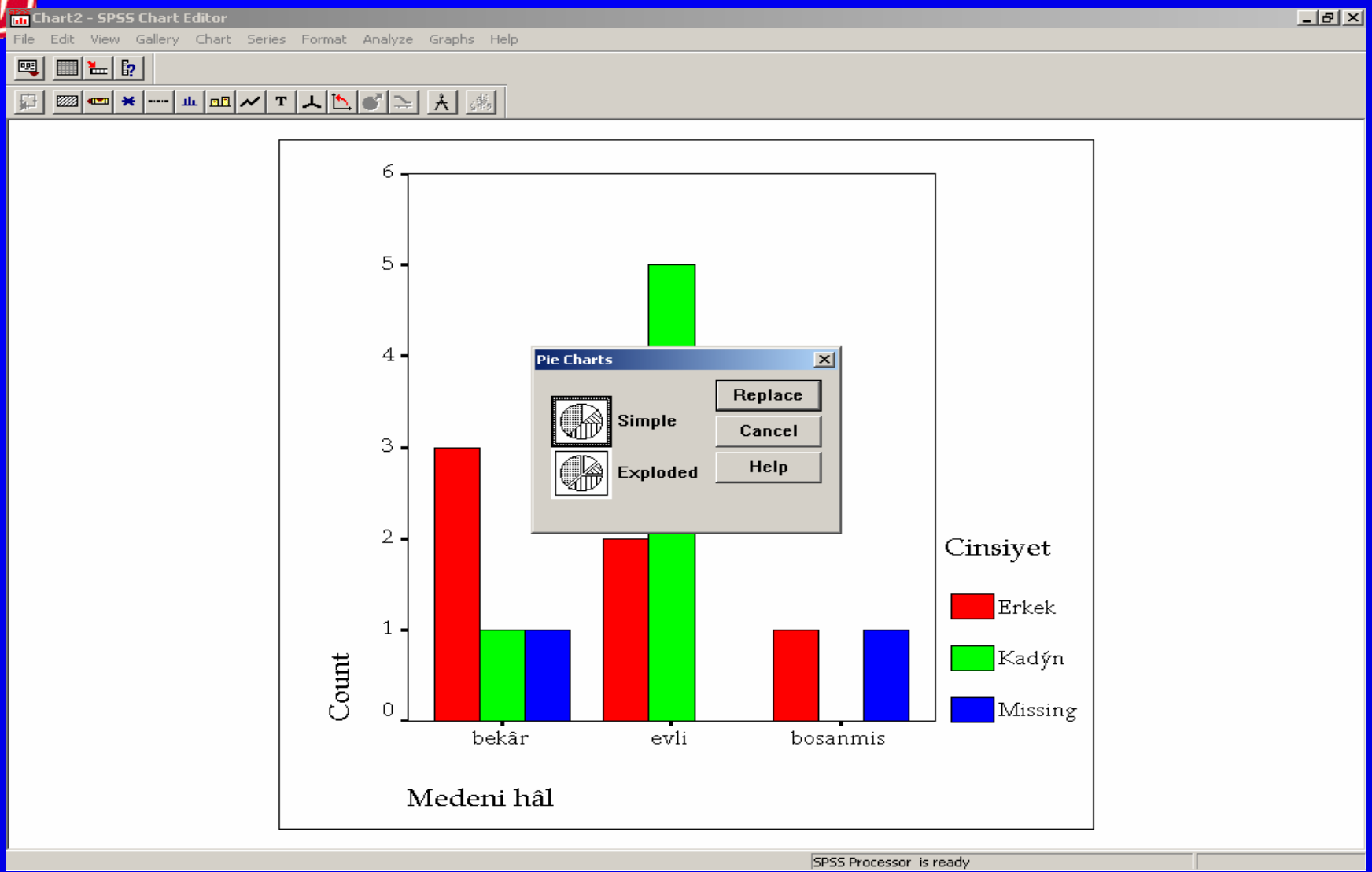


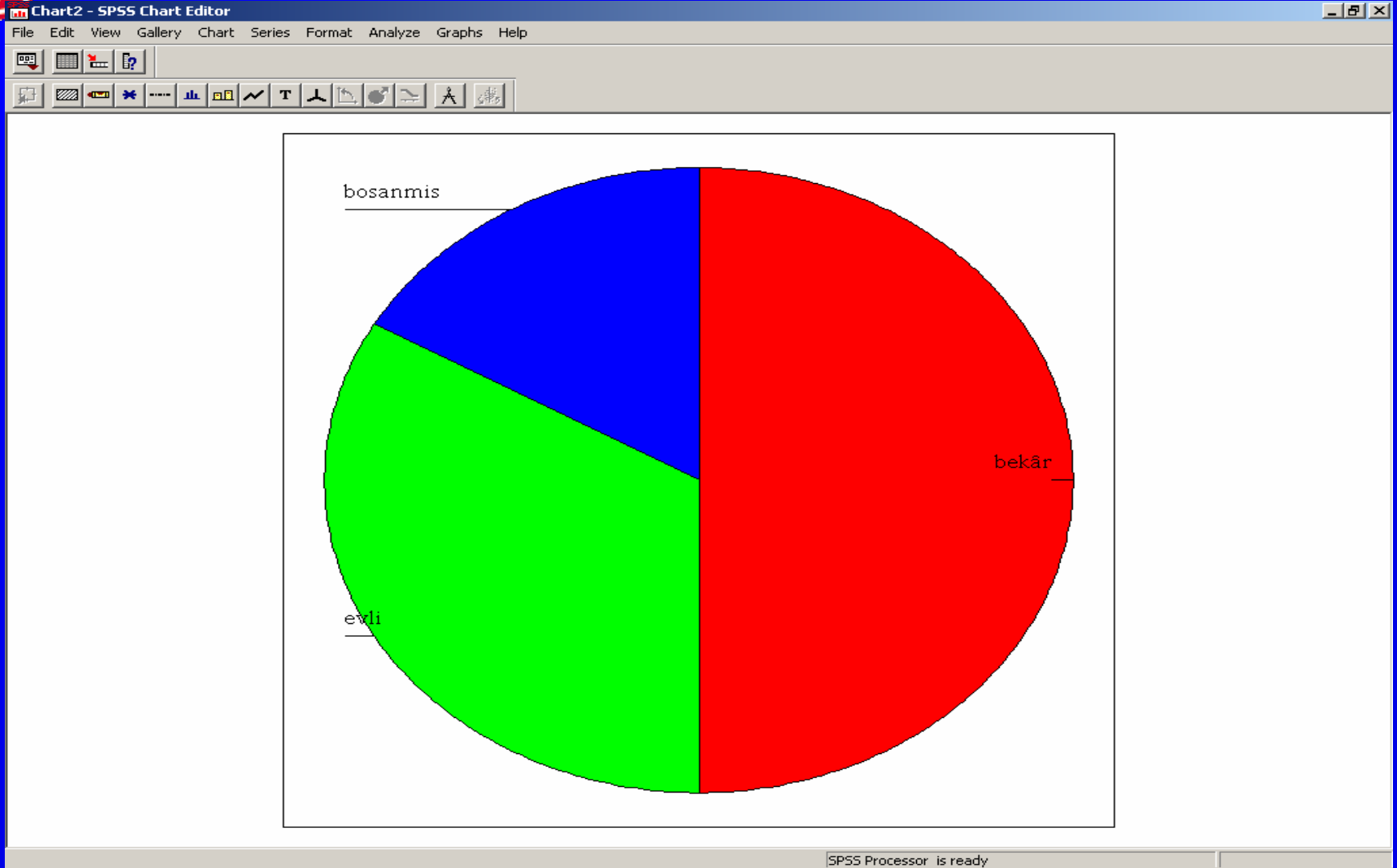














Output6 - SPSS Viewer

File Edit View Insert Format Analyze Graphs Utilities Window Help

Output

- Frequencies
  - Title
  - Notes
  - Statistics
- Frequency Table
  - Title
  - Medeni hâl
  - Cinsiyet

### Frequencies

Statistics

		Medeni hâl	Cinsiyet
N	Valid	14	12
	Missing	0	2

### Frequency Table

Medeni hâl

		Frequency	Percent	Valid Percent
Valid	bekâr	5	35,7	35,7
	evli	7	50,0	50,0
	bosanmis	2	14,3	14,3
	Total	14	100,0	100,0

Cinsiyet

		Frequency	Percent	Valid Percent	Cumulative Percent
Valid	Erkek	6	42,9	50,0	50,0
	Kadın	6	42,9	50,0	100,0
	Total	12	85,7	100,0	
Missing	Cevap Yok	2	14,3		
	Total	14	100,0		

What's This?

- Cut
- Copy
- Copy objects
- Paste After
- Create/Edit Autoscript
- Export...
- Results Coach
- Case Studies
- SPSS Pivot Table Object

Edit

Open

FloatCellsOnDisplay

SPSS Processor is ready

H: 113 , W: 351 pt



SPSS Pivot Table - table2

File Edit View Insert Pivot Format Help

## Medeni hâl

	Frequency	Percent	Valid Percent	Cumulative Percent
Valid bekâr	5	35,7	35,7	35,7
evli	7	50,0	50,0	85,7
bosanmis	2	14,3	14,3	100,0
Total	14	100,0	100,0	



SPSS Pivot Table - table2

File Edit View Insert Pivot Format Help

## Medeni hâl

	Valid			Total
	bekâr	evli	bosanmış	
Frequency	5	7	2	14
Percent	35,7	50,0	14,3	100,0
Valid Percent	35,7	50,0	14,3	100,0
Cumulative Percent	35,7	85,7	100,0	



SPSS Pivot Table - table2

File Edit View Insert Pivot **Format** Help

	Valid	Frequency	Percent	Cumulative Percent
	bekâr	5,7	5,7	35,7
	evli	0,0	0,0	85,7
	bosanmış	4,3	4,3	100,0
	Total	0,0	0,0	

Format menu options:

- Cell Properties...
- Table Properties...**
- TableLooks...
- Font...
- Footnote Marker...
- Set Data Cell Widths...
- Autofit
- Renumber Footnotes
- Rotate InnerColumn Labels
- Rotate OuterRow Labels
- Keep Together
- Break Here
- Remove Keep Together
- Remove Break Here





SPSS Pivot Table - table2  
File Edit View Insert Pivot Format Help

## Medeni hâl

		Frequency	Percent	Valid Percent	Cumulative Percent
Valid	bekâr	5	35,7	35,7	35,7
	evli	7	50,0	50,0	85,7
	bosanmis	2	14,3	14,3	100,0
	Total	14	100,0	100,0	

### Table Properties

General Footnotes Cell Formats Borders Printing

#### General

Hide empty rows and columns

#### Row Dimension Labels

In Corner

Nested

#### Column Widths

Minimum width for column labels: 36

Maximum width for column labels: 72

Minimum width for row labels: 36

Maximum width for row labels: 120

#### Sample

SPSS Pivot Table - table2

		bekâr		evli	
		1	2	1	2
1	2	5	7	2	7
2	1	5	7	2	7
3	1	5	7	2	7
4	1	5	7	2	7
5	1	5	7	2	7
6	1	5	7	2	7
7	1	5	7	2	7
8	1	5	7	2	7
9	1	5	7	2	7
10	1	5	7	2	7
11	1	5	7	2	7
12	1	5	7	2	7
13	1	5	7	2	7
14	1	5	7	2	7
15	1	5	7	2	7
16	1	5	7	2	7
17	1	5	7	2	7
18	1	5	7	2	7
19	1	5	7	2	7
20	1	5	7	2	7
21	1	5	7	2	7
22	1	5	7	2	7
23	1	5	7	2	7
24	1	5	7	2	7
25	1	5	7	2	7
26	1	5	7	2	7
27	1	5	7	2	7
28	1	5	7	2	7
29	1	5	7	2	7
30	1	5	7	2	7
31	1	5	7	2	7
32	1	5	7	2	7
33	1	5	7	2	7
34	1	5	7	2	7
35	1	5	7	2	7
36	1	5	7	2	7
37	1	5	7	2	7
38	1	5	7	2	7
39	1	5	7	2	7
40	1	5	7	2	7
41	1	5	7	2	7
42	1	5	7	2	7
43	1	5	7	2	7
44	1	5	7	2	7
45	1	5	7	2	7
46	1	5	7	2	7
47	1	5	7	2	7
48	1	5	7	2	7
49	1	5	7	2	7
50	1	5	7	2	7
51	1	5	7	2	7
52	1	5	7	2	7
53	1	5	7	2	7
54	1	5	7	2	7
55	1	5	7	2	7
56	1	5	7	2	7
57	1	5	7	2	7
58	1	5	7	2	7
59	1	5	7	2	7
60	1	5	7	2	7
61	1	5	7	2	7
62	1	5	7	2	7
63	1	5	7	2	7
64	1	5	7	2	7
65	1	5	7	2	7
66	1	5	7	2	7
67	1	5	7	2	7
68	1	5	7	2	7
69	1	5	7	2	7
70	1	5	7	2	7
71	1	5	7	2	7
72	1	5	7	2	7
73	1	5	7	2	7
74	1	5	7	2	7
75	1	5	7	2	7
76	1	5	7	2	7
77	1	5	7	2	7
78	1	5	7	2	7
79	1	5	7	2	7
80	1	5	7	2	7
81	1	5	7	2	7
82	1	5	7	2	7
83	1	5	7	2	7
84	1	5	7	2	7
85	1	5	7	2	7
86	1	5	7	2	7
87	1	5	7	2	7
88	1	5	7	2	7
89	1	5	7	2	7
90	1	5	7	2	7
91	1	5	7	2	7
92	1	5	7	2	7
93	1	5	7	2	7
94	1	5	7	2	7
95	1	5	7	2	7
96	1	5	7	2	7
97	1	5	7	2	7
98	1	5	7	2	7
99	1	5	7	2	7
100	1	5	7	2	7

Tamam

İptal

Uygula

Yardım



Untitled - SPSS Data Editor

File Edit View Data Transform Analyze Graphs Utilities Window Help

Reports  
Descriptive Statistics  
Tables  
Compare Means  
General Linear Model  
Mixed Models  
Correlate  
Regression  
Loglinear  
Classify  
Data Reduction  
Scale  
Nonparametric Tests  
Time Series  
Survival  
Multiple Response  
Missing Value Analysis...

Frequencies...  
Descriptives...  
Explore...  
Crosstabs...  
Ratio...

	yas	yet	var	var	var	var	var
1	35						
2	25						
3	15						
4	65						
5	45						
6	22						
7	32						
8	36	1	\$187.00	E			
9	45	1	\$98.00	K			
10	18	0	\$55.00	CY			
11	17	0	\$25.00	E			
12	33	2	\$65.00	E			
13	28	1	\$197.00	K			
14	29	1	\$339.00	K			
15							
16							
17							
18							
19							
20							

Data View Variable View

Crosstabs

SPSS Processor is ready



Untitled - SPSS Data Editor

File Edit View Data Transform Analyze Graphs Utilities Window Help

13:

	var	var	var	var
1				
2				
3				
4				
5				
6				
7				
8				
9				
10				
11				
12				
13				
14				
15				
16				
17				
18				
19				
20				

**Crosstabs**

Yanıtlayanın yaşı [yas]  
Medeni hâl [medenhal]  
Aylık gelir [gelir]  
Cinsiyet [cinsiyet]

Row(s):

Column(s):

Layer 1 of 1

Previous Next

Display clustered bar charts

Suppress tables

Exact... Statistics... Cells... Format...

OK Paste Reset Cancel Help

Data View Variable View

SPSS Processor is ready



Output7 - SPSS Viewer

File Edit View Insert Format Analyze Graphs Utilities Window Help

Output

- Crosstabs
  - Title
  - Notes
  - Case Processing Summary
  - Medeni hâl \* Yanıtlayanın yasi

→ **Crosstabs**

**Case Processing Summary**

	Cases					
	Valid		Missing		Total	
	N	Percent	N	Percent	N	Percent
Medeni hâl * Yanıtlayanın yasi	14	100,0%	0	,0%	14	100,0%

**Medeni hâl \* Yanıtlayanın yasi Crosstabulation**

Count

		Yanıtlayanın yasi									
		15	17	18	22	25	28	29	32	33	
Medeni hâl	bekâr	1	1	1	1	1	0	0	0	0	0
	evli	0	0	0	0	0	1	1	1	0	0
	bosanmis	0	0	0	0	0	0	0	0	1	1
Total		1	1	1	1	1	1	1	1	1	1

SPSS Processor is ready



Untitled - SPSS Data Editor

File Edit View Data Transform Analyze Graphs Utilities Window Help

8:

Compute...  
Random Number Seed...  
Count...  
Recode  
Categorize Variables...  
Rank Cases...  
Automatic Recode...  
Create Time Series...  
Replace Missing Values...  
Run Pending Transforms

Into Same Variables...  
Into Different Variables...

	y			yet	var	var	var	var	var
1									
2									
3									
4	65	1	\$100.00	K					
5	45	2	\$185.00	CY					
6	22	0	\$300.00	E					
7	32	1	\$351.00	K					
8	36	1	\$187.00	E					
9	45	1	\$98.00	K					
10	18	0	\$55.00	CY					
11	17	0	\$25.00	E					
12	33	2	\$65.00	E					
13	28	1	\$197.00	K					
14	29	1	\$339.00	K					
15									
16									
17									
18									
19									
20									

Data View / Variable View

Recode Into Same Variables

SPSS Processor is ready



Untitled - SPSS Data Editor

File Edit View Data Transform Analyze Graphs Utilities Window Help

8:

Recode into Same Variables

Numeric Variables:

- Medeni hâl [medenhal]
- Aylık gelir [gelir]
- Cinsiyet [cinsiyet]

Yanıtlayanın yaşı [yas]

OK

Paste

Reset

Cancel

Help

If...

Old and New Values...

	var	var	var	var
9				
10				
11				
12				
13				
14				
15				
16				
17				
18				
19				
20				

Data View Variable View

SPSS Processor is ready



Untitled - SPSS Data Editor

File Edit View Data Transform Analyze Graphs Utilities Window Help

5:

Recode into Same Variables

Numeric Variables:

OK

Recode into Same Variables: Old and New Values

Old Value

- Value: [ ]
- System-missing
- System- or user-missing
- Range:  
[46] through [ ]
- Range:  
Lowest through [ ]
- Range:  
[ ] through highest
- All other values

New Value

- Value: [ ]
- System-missing

Old → New:

- 15 thru 25 → 1
- 26 thru 35 → 2
- 36 thru 45 → 3

Add Change Remove

Continue Cancel Help

13	28	1	\$197.00 K				
14	29	1	\$339.00 K				
15							
16							
17							
18							
19							
20							

Data View Variable View

SPSS Processor is ready



SPSS Pivot Table - table2

File Edit View Insert Pivot Format Help

Bookmarks

Transpose Rows and Columns

Move Layers to Rows

Move Layers to Columns

Reset Pivots to Defaults

Pivoting Trays

Go to Layer...

		Percent	Cumulative Percent
Valid	bekâr	35,7	35,7
	evli	50,0	85,7
	bosanmış	14,3	100,0
	Total	100,0	





# BBY 207: Sosyal Bilimlerde Araştırma Yöntemleri I

<http://yunus.hacettepe.edu.tr/~tonta/courses/fall2004/bby207/>

Untitled - SPSS Data Editor

File Edit View Data Transform Analyze Graphs Utilities Window Help

3: yeniyas 1

	yas	medenhal	gelir	cinsiyet	yeniyas	var
1	35	evli	\$155.00	Erkek	2	
2	25	bekâr	\$245.00	Kadın	1	
3	15	bekâr	\$255.00	Erkek	1	
4	65	evli	\$100.00	Kadın	4	
5	45	boşanmış	\$185.00	Cevap Yok	3	
6	22	bekâr	\$300.00	Erkek	1	
7	32	evli	\$351.00	Kadın	2	
8	36	evli	\$187.00	Erkek	3	
9	45	evli	\$98.00	Kadın	3	
10	18	bekâr	\$55.00	Cevap Yok	1	
11	17	bekâr	\$25.00	Erkek	1	
12	33	boşanmış	\$65.00	Erkek	2	
13	28	evli	\$197.00	Kadın	2	
14	29	evli	\$339.00	Kadın	2	

Data View Variable View

SPSS Processor is ready

Başlat

bby207

Microsoft PowerPoint ...

Untitled - SPSS Data ...

TR

8:50 PM



Untitled - SPSS Data Editor

File Edit View Data Transform Analyze Graphs Utilities Window Help

3: yenyias 1

**Crosstabs**

Row(s): Yanıtlayanın yeni yası

Column(s): Medeni hâl [medenhal]

Layer 1 of 1

Previous Next

Display clustered bar charts

Suppress tables

Exact... Statistics... Cells... Format...

SPSS Processor is ready

Başlat

bby207 Microsoft ... Untitled - ... Base Syst... C:\Progra... TR 9:01 PM

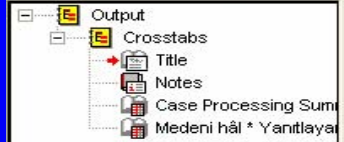
	yeniyas	var
1	2	
2	1	
3	1	
4	4	
5	3	ok
6	1	
7	2	
8	3	
9	3	
10	1	ok
11	1	
12	2	
13	2	
14	2	

	Yanıtlayanın yası [yas]	Aylık gelir [gelir]	Cinsiyet [cinsiyet]
11	17	\$25.00	Erkek
12	33	\$65.00	Erkek
13	28	\$197.00	Kadın
14	29	\$339.00	Kadın



## Output3 - SPSS Viewer

File Edit View Insert Format Analyze Graphs Utilities Window Help



### → Crosstabs

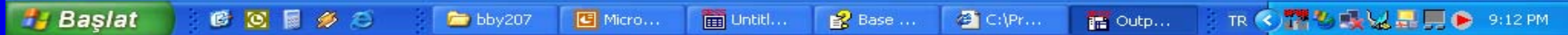
#### Case Processing Summary

	Cases					
	Valid		Missing		Total	
	N	Percent	N	Percent	N	Percent
Medeni hâl * Yanıtlayanın yeni yasi	14	100.0%	0	.0%	14	100.0%

#### Medeni hâl \* Yanıtlayanın yeni yasi Crosstabulation

Count		Yanıtlayanın yeni yasi				Total
		15-25	26-35	36-45	46-66	
Medeni hâl	bekâr	5	0	0	0	5
	evli	0	4	2	1	7
	boşanmış	0	1	1	0	2
Total		5	5	3	1	14

SPSS Processor is ready





Untitled - SPSS Data Editor

File Edit View Data Transform Analyze Graphs Utilities Window Help

General Tables

Statistics Labels Appear

Across the top  Down the side  In the layer

Rows: medenhal

Columns: cinsiyet

Layers:

Selected Variable

Defines cells  Is summarized  Omit Label

>Nest UnNest<

Edit Statistics...

Insert Total

Yanıtlayanın yası [yas]  
Aylık gelir [gelir]  
Yanıtlayanın yeni yası

Mult Response:

Mult Response Sets...

General Tables: Titles

Title: DENEME

Continue

Cancel

Help

Caption:

Corner:

yeniyas	var
26-35	
15-25	
15-25	
46-66	
36-45	
15-25	
26-35	
36-45	
36-45	
15-25	
15-25	
26-35	
26-35	
26-35	

9  
10  
11  
12  
13  
14

29 evli \$339,00 Kadın

Data View Variable View

SPSS Processor is ready

Başlat

bby207 Microsoft... Untitled - ... Base Sys... C:\Progr... Output3 ... TR 9:20 PM



Output3 - SPSS Viewer

File Edit View Insert Format Analyze Graphs Utilities Window Help

Output

- Crosstabs
- Notes
- Tables
- Title
- Notes
- DENEME

### Tables

DENEME

		Cinsiyet	
		Erkek	Kadın
Medeni	bekâr	3	1
hâl	evli	2	5
	boşanmış	1	

SPSS Processor is ready

Başlat

bby207 Microsoft... Untitled -... Base Sys... C:\Progr... Output3 ... TR 9:22 PM



Untitled - SPSS Data Editor

File Edit View Data Transform Analyze Graphs Utilities Window Help

11:

	yas	medenhal	gelir	cinsiyet	yeniyas	var
1			\$155.00	Erkek	26-35	
2					25	
3					25	
4					25	
5					26	
6					25	
7					25	
8					25	
9					25	
10					25	
11	17	bekâr	\$25.00	Erkek	15-25	
12	33	boşanmış	\$65.00	Erkek	26-35	
13	28	evli	\$197.00	Kadın	26-35	
14	29	evli	\$339.00	Kadın	26-35	

**General Tables**

Statistics Labels Appear  
 Across the top  Down the side  In the layer

Rows:  
medenhal  
medenhalTotal

Columns: [Statistics Dimension]  
cinsiyet[Count, Col %]

Layers:

Selected Variable  
 Defines cells  
 Is summarized  
 Omit Label  
>Nest UnNest<  
Edit Statistics...  
Insert Total  
Total Label:  
Total

Format... Titles...

OK Paste Reset Cancel Help

Mult Response Sets...

Mult Response:



Output3 - SPSS Viewer

File Edit View Insert Format Analyze Graphs Utilities Window Help

Output

- Crosstabs
- Notes
- Tables
  - Title
  - Notes
  - DENEME
- Tables
  - Title
  - Notes
  - DENEME

### Tables

DENEME

		Cinsiyet	
		Erkek	Kadın
Medeni	bekâr	3	1
hâl	evli	2	5
	boşanmış	1	

### Tables

DENEME

		Cinsiyet			
		Erkek		Kadın	
		Count	Col %	Count	Col %
Medeni	bekâr	3	50.0%	1	16.7%
hâl	evli	2	33.3%	5	83.3%
	boşanmış	1	16.7%		
Total		6	100.0%	6	100.0%

Double click to edit Pivot Table

SPSS Processor is ready

H: 129 , W: 332 pt

Başlat

bby207

Microsoft...

Untitled ...

Base Sy...

C:\Progr...

Output3 ...

TR

9:31 PM



Output3 - SPSS Viewer

File Edit View Insert Format Analyze Graphs Utilities Window Help

Undo Ctrl+Z  
Cut Ctrl+X  
Copy Ctrl+C  
Copy objects Ctrl+K  
Paste After Ctrl+V  
Paste Special...  
Delete Del  
Select All Ctrl+A  
Select

Outline  
Options...  
Links...  
SPSS Pivot Table Object

Graph  
Title  
Notes  
Pie of value(yas)  
Graph  
Title  
Notes  
Pie of value(gelir)  
Graph  
Title  
Notes  
Pie of value(medenhal)

### Tables

DENEME

		Cinsiyet	
		Erkek	Kadın
Medeni	bekâr	3	1
hâl	evli	2	5
	boşanmış	1	

### Tables

DENEME

		Cinsiyet			
		Erkek		Kadın	
		Count	Col %	Count	Col %
Medeni	bekâr	3	50.0%	1	16.7%
hâl	evli	2	33.3%	5	83.3%
	boşanmış	1	16.7%		
Total		6	100.0%	6	100.0%

### Graph

FrozenRowsCount

SPSS Processor is ready

H: 129 , W: 332 pt

Başlat

bby207 Micro... Untitl... Base ... C:\Pr... Outp... Belge... TR 9:41 PM





Belge1 - Microsoft Word

Dosya Düzen Görünüm Ekle Biçim Araçlar Tablo Pencere Yardım

Normal + Syste System 10

Yardım için soru yazın

SPSS

DENEME

		Cinsiyet			
		Erkek		Kadın	
		Count	Col %	Count	Col %
Medeni hâl	bekâr	3	50.0%	1	16.7%
	evli	2	33.3%	5	83.3%
	boşanmış	1	16.7%		
Total		6	100.0%	6	100.0%

Sayfa 1 Böl 1 1/1 Bşl 3.4 cm Sat 3 Süt 2 KAY DİM SEÇ ÜYZ Türkçe

Başlat bby207 Micro... Untitl... Base ... C:\Pr... Outp... Belge... TR 9:43 PM



# BBY 207: Sosyal Bilimlerde Araştırma Yöntemleri I

<http://yunus.hacettepe.edu.tr/~tonta/courses/fall2004/bby207/>

Microsoft Excel - deneme.xls

Yardım için soru yazın

Dosya Düzen Görünüm Ekle Biçim Araçlar Veri Pencere Yardım

Arial Tur 10

C7

	A	B	C	D	E	F	G	H	I	J	K	L	M	N
1	dergi	yil	cilt	sayı	sayfa	kütüphane								
2	science	1998	1	6	67-73	hacettepe								
3	lancet	2000	23	4	32-38	gazi								
4	cancer	2001	12	3	51-65	odtu								
5	library quarterly	2001	15	2	123-132	hacettepe								
6														
7														
8														
9														
10														
11														
12														
13														
14														
15														
16														
17														
18														
19														
20														
21														
22														
23														
24														
25														
26														
27														
28														
29														
30														
31														

Sayfa1 / Sayfa2 / Sayfa3

Hazır SAYI

Başlat

bby207 Microsoft Po... C:\Program ... Belge1 - Micr... Microsoft Ex...

9:53 PM



Untitled - SPSS Data Editor

File Edit View Data Transform Analyze Graphs Utilities Window Help

4:

	var	var	var	var	var	var	var	var	var	var	var	var
1												
2												
3												
4												
5												
6												
7												
8												
9												
10												
11												
12												
13												
14												
15												
16												
17												
18												
19												
20												
21												
22												
23												
24												
25												
26												
27												
28												
29												

Open File

Konum: Masaüstü

- nevzat
- AGARD and RTO.MDB
- All Sound Editor
- Bilgi ve Belge Yönetimi Bölümü.doc
- Calimera Final.doc
- Calimera guidelines full version Jan 2005.doc
- cookie dersP2T.ppt
- cookie.zip
- coskunvedayemegi.zip
- deneme1.sav
- deneme.xls
- eBay

Dosya adı: deneme.xls

Dosya türü: All Files (\*.\*)

Aç Paste İptal

Data View Variable View

SPSS Processor is ready

Başlat

bby207

Microsoft PowerPoint ...

Untitled - SPSS Data ...

TR 9:54 PM



# BBY 207: Sosyal Bilimlerde Araştırma Yöntemleri I

<http://yunus.hacettepe.edu.tr/~tonta/courses/fall2004/bby207/>

Untitled - SPSS Data Editor

File Edit View Data Transform Analyze Graphs Utilities Window Help

7 : sayı

	dergi	yil	cilt	sayı	sayfa	kütüphan
1	science	1998	1	6	67-73	hacettepe
2	lancet	2000	23	4	32-38	gazi
3	cancer	2001	12	3	51-65	odtü
4	library quarterly	2001	15	2	123-132	hacettepe
5						
6						
7						
8						
9						
10						
11						
12						
13						
14						
15						
16						

Data View Variable View

SPSS Processor is ready

Başlat

bby207

Microsoft PowerPoint ...

Untitled - SPSS Data ...

TR 9:55 PM